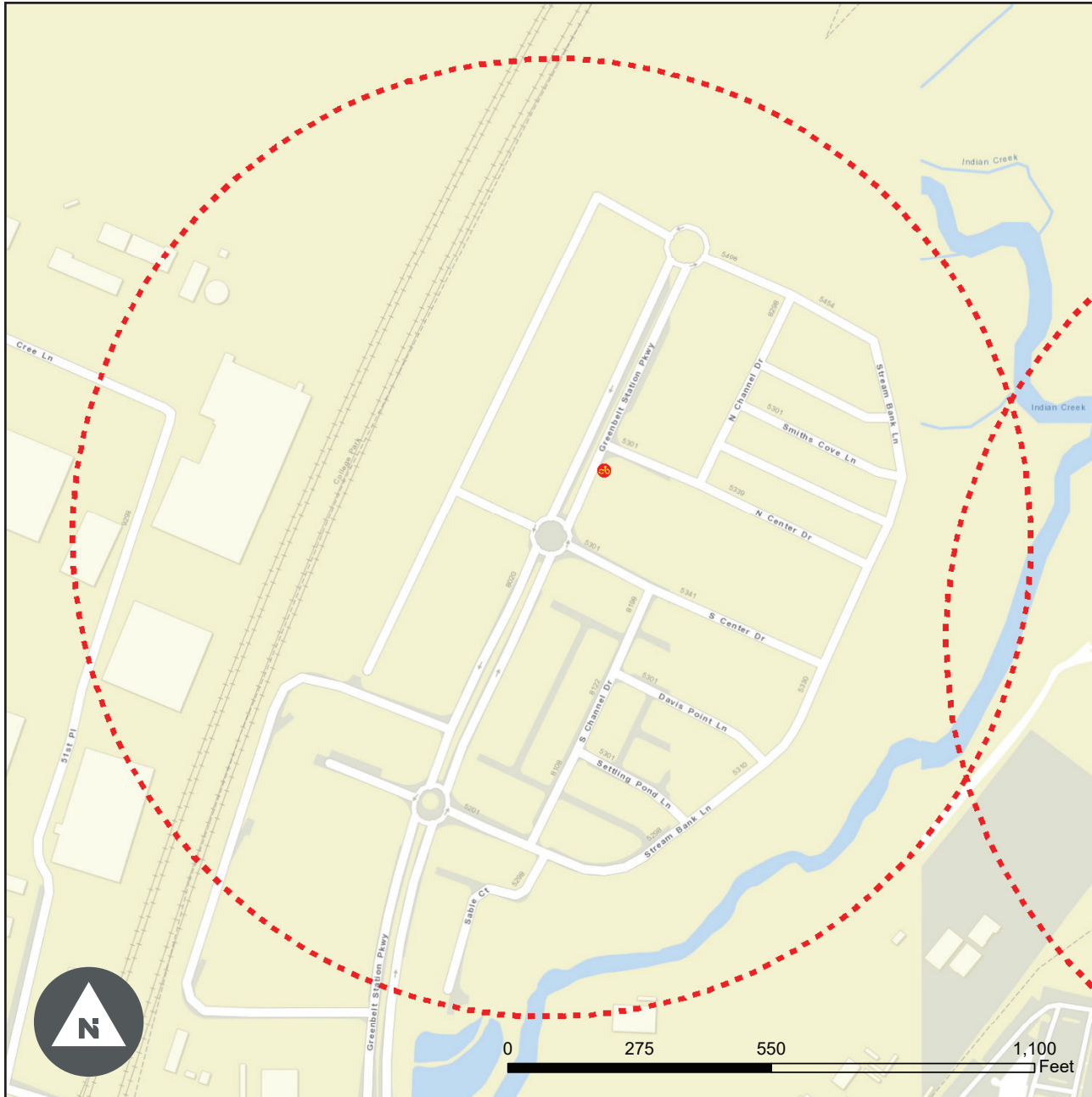


Greenbelt

Station Area #63A - Greenbelt Station Parkway

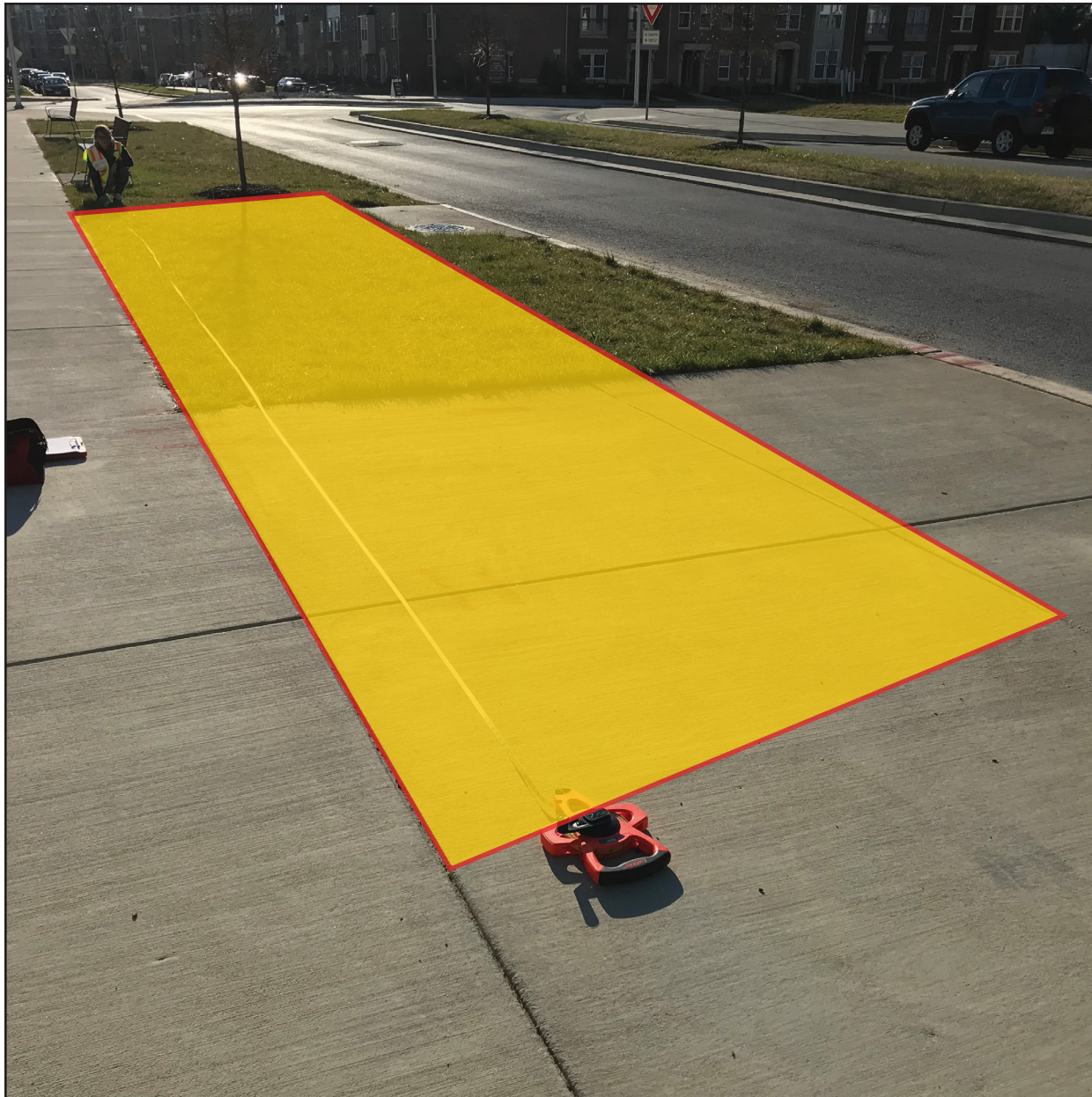


Location options best suited for a bike share station within general station area identified by feasibility study

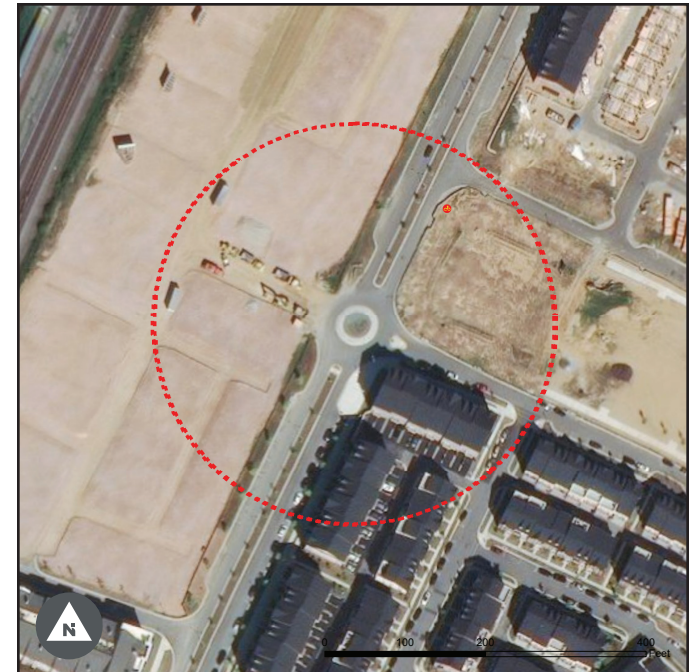


1,000' Station Site Buffer

Station Area #63 - Greenbelt Station Parkway
Greenbelt Station Parkway and North Center Drive

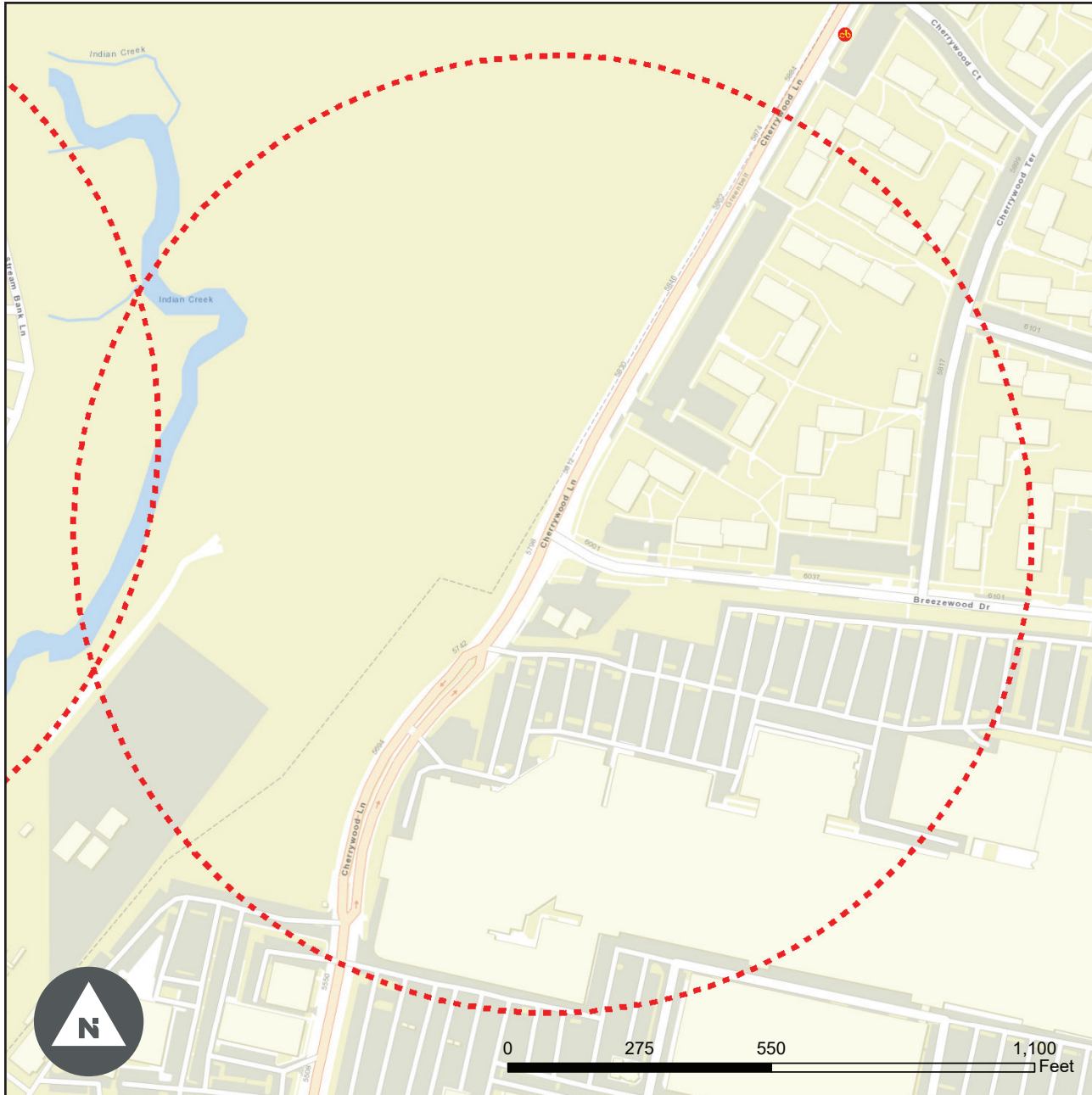


Preferred Location



- Jurisdiction:** Greenbelt
- Ownership:** City of Greenbelt
- Public/Private:** Public
- Station Configuration:** 90 Degrees (Standard)
- Dock Size:** 15
- Solar Access:** Yes
- Location:** Back of sidewalk
- Concrete Pad Needed:** Yes
- Pedestrian Facilities:** 6'+ sidewalks
- ADA Curb Ramps:** Present
- Bike Facilities:** Indian Creek Trail

Station Area #66A - Breezewood Drive and Cherrywood Lane



Location options best suited for a bike share station within general station area identified by feasibility study

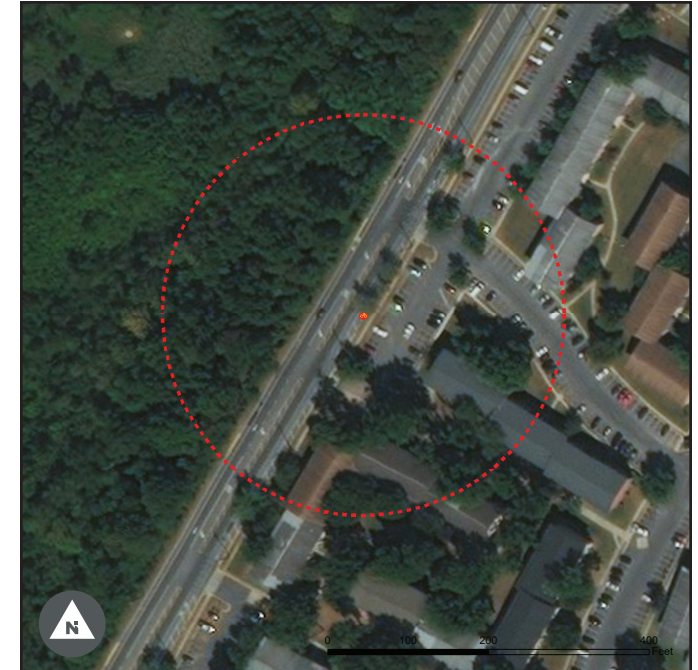


1,000' Station Site Buffer

Station Area #66 - Breezewood Drive and Cherrywood Lane

Cherrywood Lane

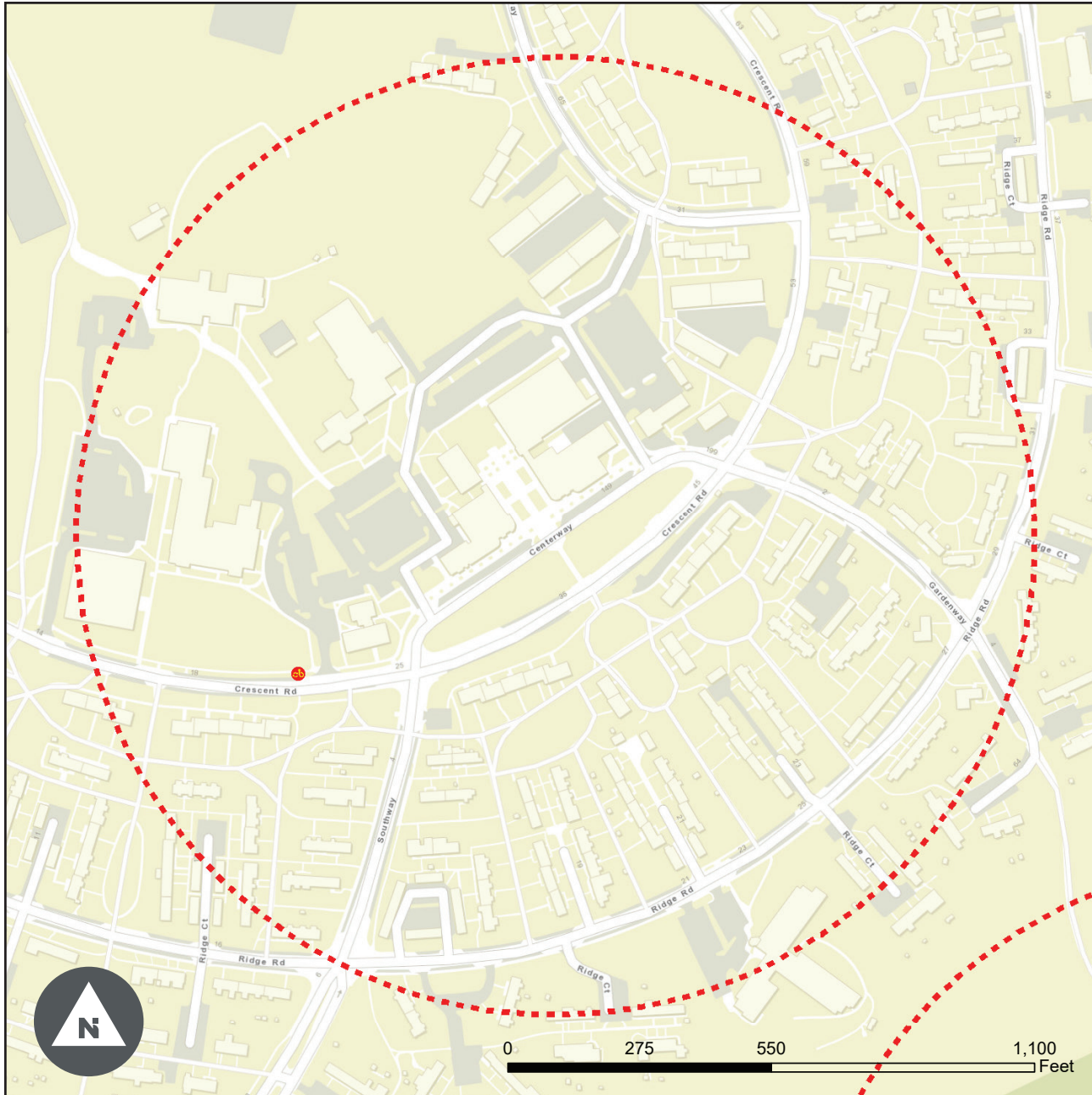
Preferred Location



- Jurisdiction:** Greenbelt
- Ownership:** City of Greenbelt
- Public/Private:** Public
- Station Configuration:** 90 Degrees (Standard)
- Dock Size:** 15
- Solar Access:** Yes
- Location:** In street
- Concrete Pad Needed:** No
- Pedestrian Facilities:** 6'+ sidewalks
- ADA Curb Ramps:** Present
- Bike Facilities:** Adjacent bike lane

Note: Will install flex posts around this station as a protective buffer against traffic.

Station Area #70 - Roosevelt Center



Location options best suited for a bike share station within general station area identified by feasibility study



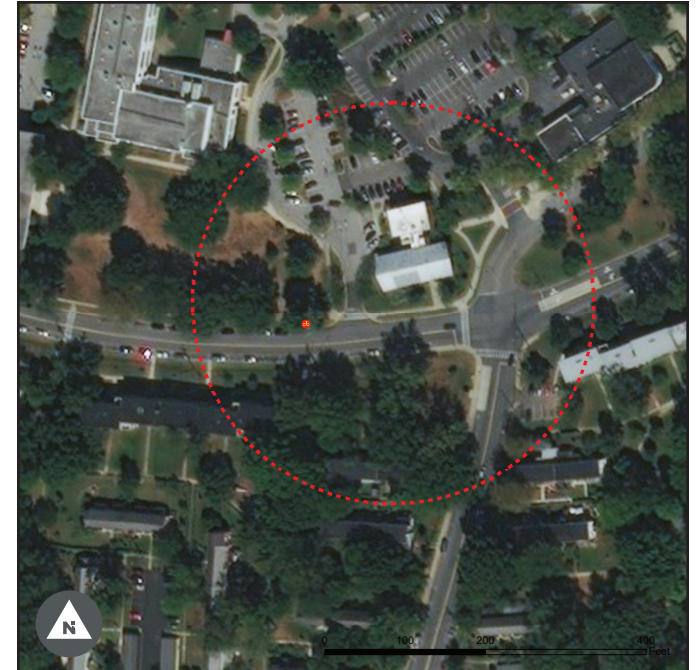
1,000' Station Site Buffer

Station Area #70 - Roosevelt Center

Crescent Road

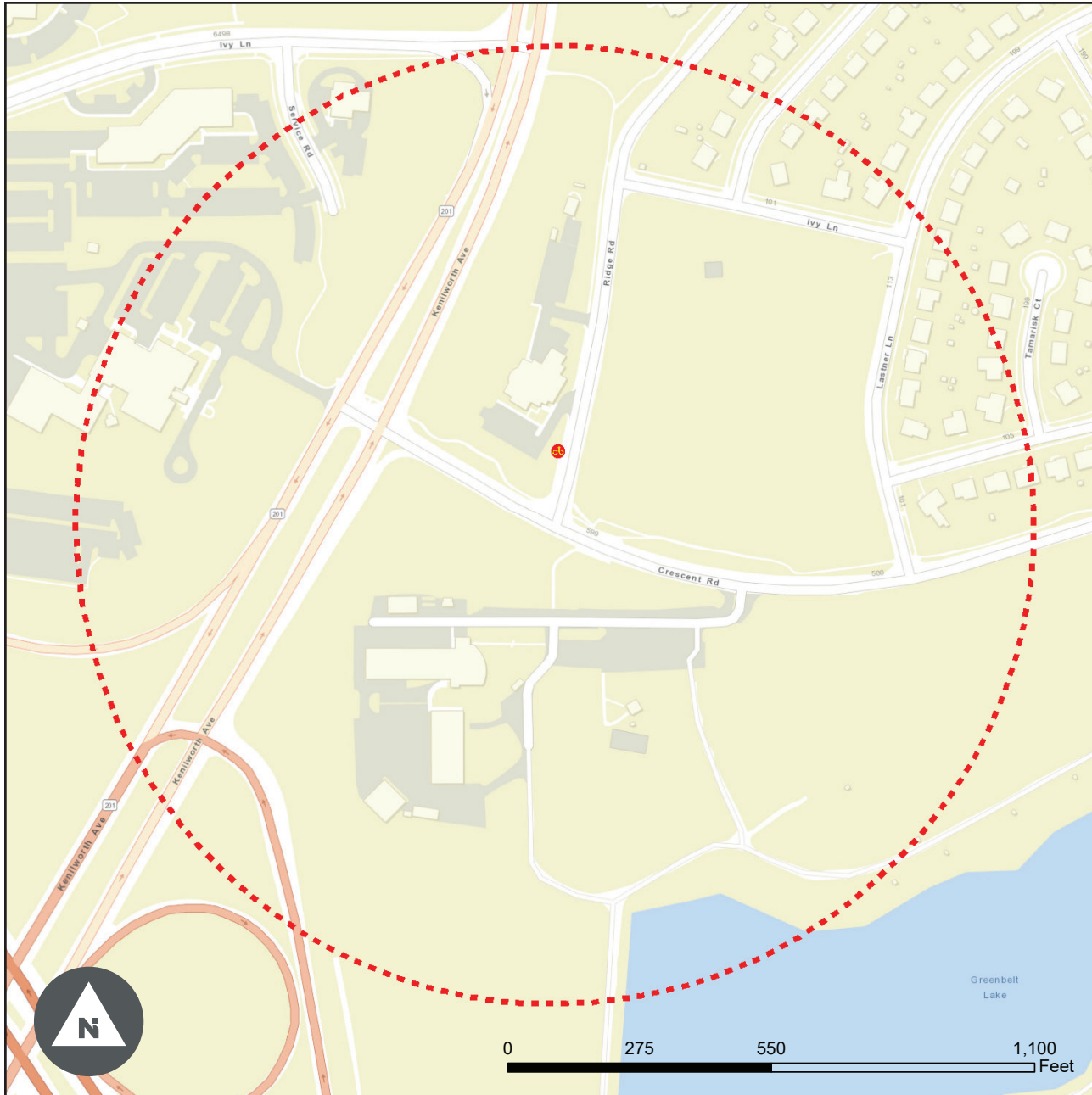


Preferred Location



- Jurisdiction:** Greenbelt
- Ownership:** City of Greenbelt
- Public/Private:** Public
- Station Configuration:** 90 Degrees (Standard)
- Dock Size:** 15
- Solar Access:** Yes
- Location:** Sidewalk
- Concrete Pad Needed:** Yes
- Pedestrian Facilities:** 4' sidewalks
- ADA Curb Ramps:** Present
- Bike Facilities:** Off-street path under Crescent Road

Station Area #69 - Crescent Road and Ridge Road

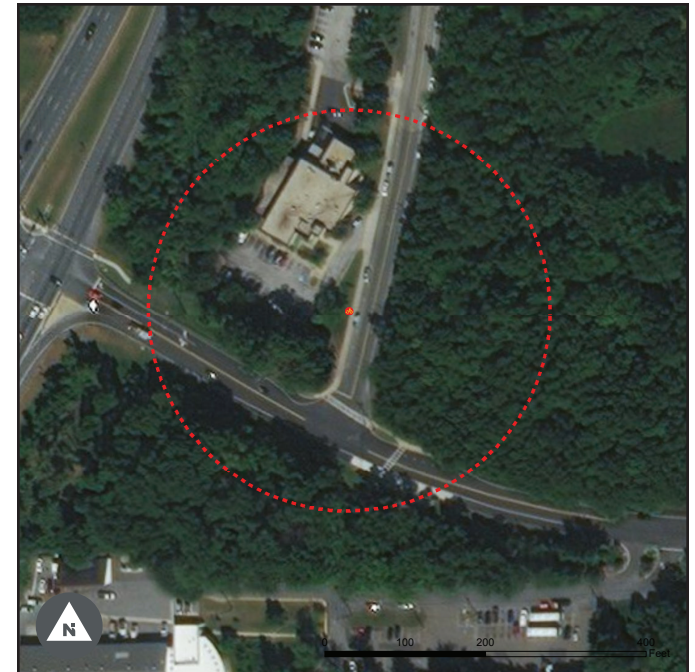


Station Area #69 - Crescent Road and Ridge Road

Ridge Road



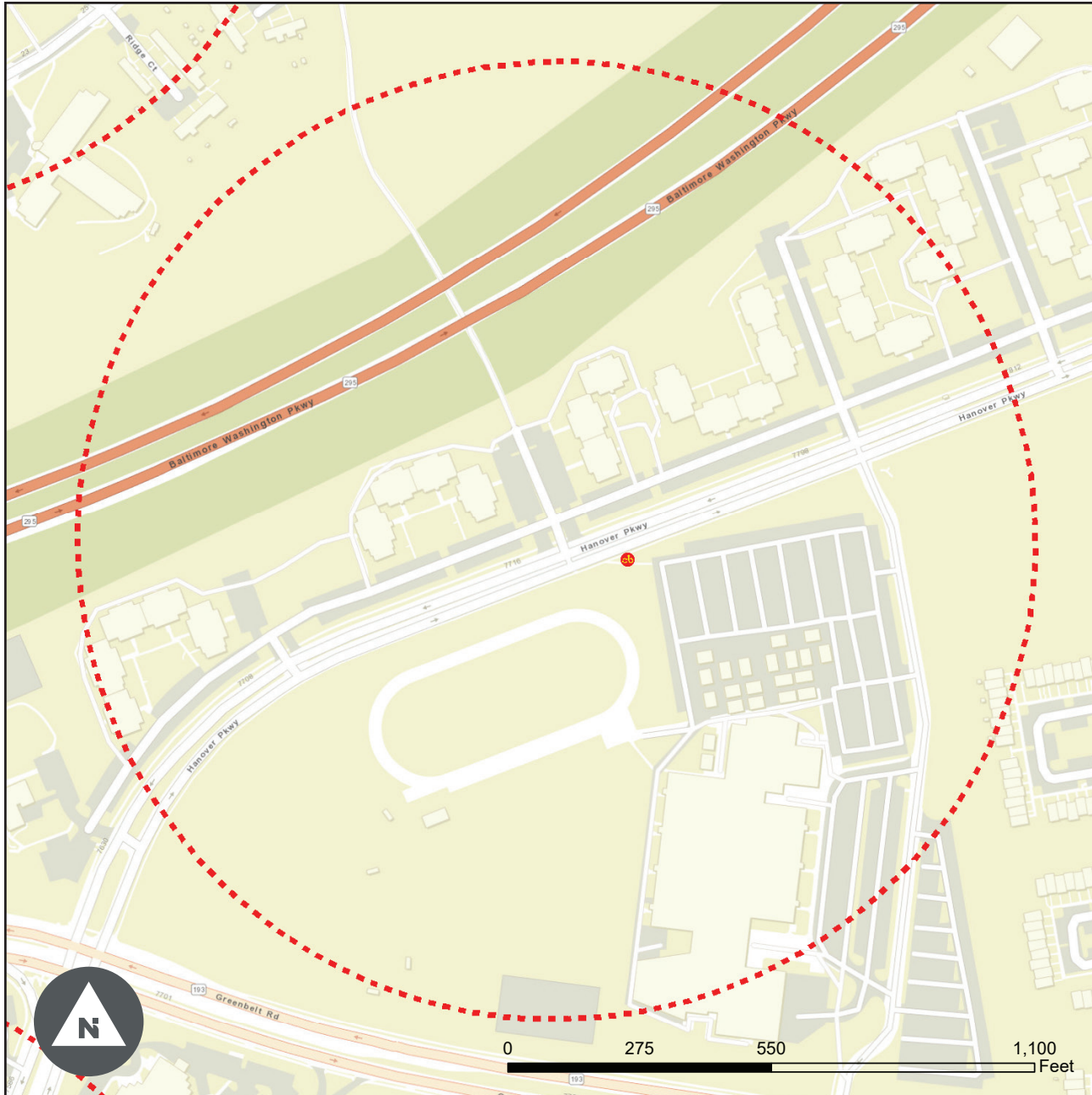
Preferred Location




- Jurisdiction:** Greenbelt
- Ownership:** City of Greenbelt
- Public/Private:** Public
- Station Configuration:** 90 Degrees (Standard)
- Dock Size:** 15
- Solar Access:** Tree limbing needed.
- Location:** Off-street/Grass
- Concrete Pad Needed:** Yes
- Pedestrian Facilities:** 4' sidewalks
- ADA Curb Ramps:** Present
- Bike Facilities:** Off-street path along Crescent Road

Note: Regrading needed, as well as a NO PARKING zone for rebalancing.

Station Area #72 - Hanover Parkway



 Location options best suited for a bike share station within general station area identified by feasibility study

 1,000' Station Site Buffer

Station Area #72 - Hanover Parkway

Eleanor Roosevelt High School

Preferred Location



- Jurisdiction:** Greenbelt
- Ownership:** Prince George's County Public Schools
- Public/Private:** Public
- Station Configuration:** 90 Degrees (Standard)
- Dock Size:** 15
- Solar Access:** Yes
- Location:** Back of sidewalk
- Concrete Pad Needed:** Yes
- Pedestrian Facilities:** 4' sidewalks
- ADA Curb Ramps:** Present
- Bike Facilities:** Spellman Overpass