

VKA
 ENGINEERS PLANNERS
 LANDSCAPE ARCHITECTS SURVEYORS
 VIKI MARYLAND, LLC
 20251 CENTURY BOULEVARD SUITE #400
 GERMANTOWN, MARYLAND 20874
 PHONE: (301) 916-4100
 FAX: (301) 916-2262
 GERMANTOWN, MD. TYSONS, VA.

PREPARED FOR:
THE NRP GROUP, LLC
 1228 EUCLID AVENUE
 4TH FLOOR
 CLEVELAND, OH. 44115
 216.584.0602
 KARL ALT

DESIGN CONSULTANTS

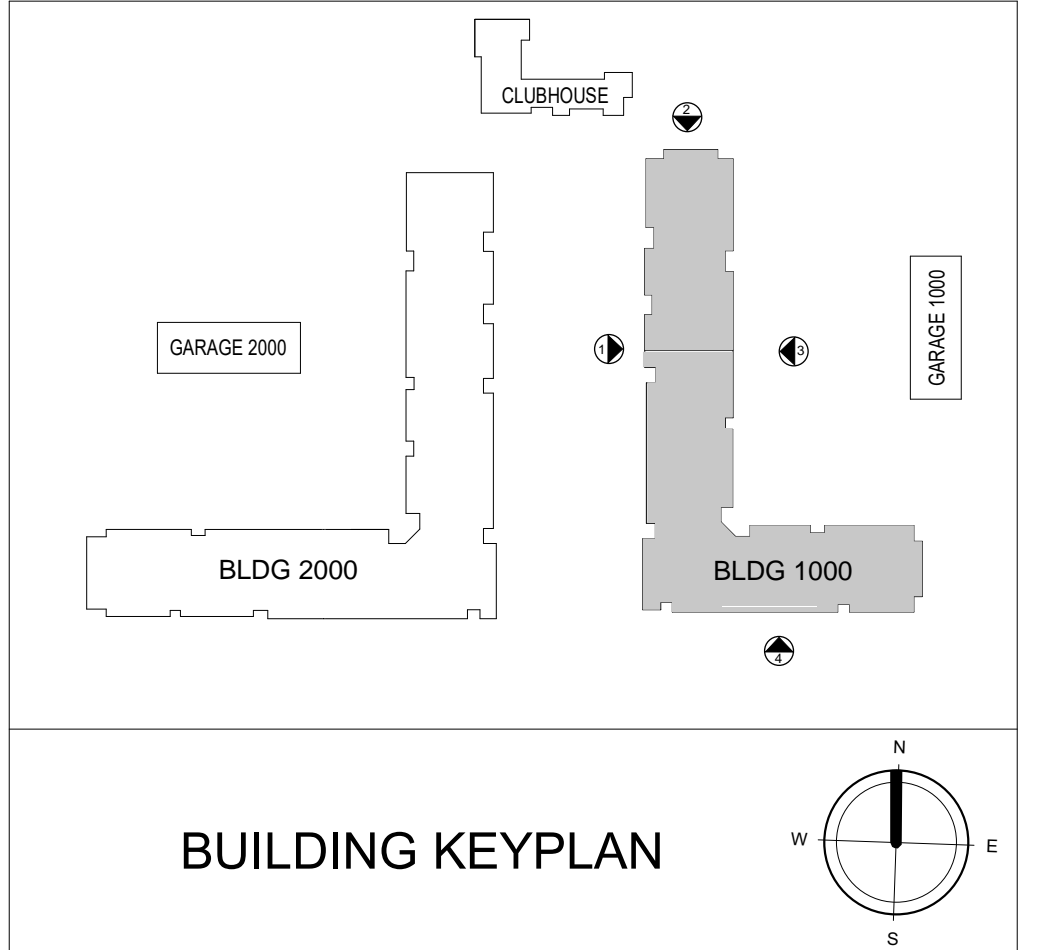
CIVIL ENGINEER
VKA MARYLAND, LLC
 20251 CENTURY BOULEVARD
 SUITE 400
 GERMANTOWN MD. 20874
 301.916.4100
 DON NELSON, P.E.

ARCHITECT
DWELL DESIGN STUDIO, LLC
 8200 GREENSBORO DRIVE
 SUITE 650
 MCLEAN, VA. 22102
 571.253.6950
 DON FLOOR III, RA

LANDSCAPE ARCHITECT
URBAN, LTD.
 4200-D TECHNOLOGY COURT
 CHANTILLY, VA. 20151
 703.642.2280
 ADAM STEINER, PLA

ATTORNEY
MCNAMEE HOSEA
 SUITE 200
 GREENBELT, MD. 20770
 301.441.2420
 MATTHEW TEDESCO

TRAFFIC ENGINEER
LENHART TRAFFIC CONSULTING, INC
 645 BALTIMORE BOULEVARD
 SUITE 214
 SEVERNA PARK, MD. 21146
 410.216.333
 MIKE LENHART



EXTERIOR FINISH LEGEND	
1.1	BRICK VENEER
1.2	PAINTED CONCRETE
2.1	CEMENTITIOUS PANEL WITH REVEAL 1
2.2	CEMENTITIOUS PANEL WITH REVEAL 2
2.3	CEMENTITIOUS PANEL WITH REVEAL 3
3.1	CEMENTITIOUS SIDING 1
3.2	CEMENTITIOUS SIDING 2
3.3	CEMENTITIOUS SIDING 3
3.4	CEMENTITIOUS SIDING 4
4.1	METAL PANEL 1
4.2	METAL PANEL 2
5.1	METAL BALCONY RAILING
5.2	STOREFRONT SYSTEM
5.3	ARCHITECTURAL SIGNAGE
5.4	METAL CANOPY
6.1	ASPHALT SHINGLE ROOF

REVISIONS	DATE

PROFESSIONAL SEAL

GREENBELT METRO
 21ST ELECTION DISTRICT
 PRINCE GEORGE'S COUNTY,
 MARYLAND
 WSSC GRID: 212NE06
 TAX MAP: 26-C2
MNCPPC
DSP-19014/00

BLDG 1000 ELEVATIONS

DRAWN BY: _____
 DESIGNED BY: _____
 DATE ISSUED: _____
 VIKI PROJECT _____
 DRAWING NO. _____
 SHEET NO. **DSP-31**



4 BUILDING 1000 - SOUTH ELEVATION
 1/16" = 1'-0"



3 BUILDING 1000 - EAST ELEVATION
 1/16" = 1'-0"



2 BUILDING 1000 - NORTH ELEVATION
 1/16" = 1'-0"

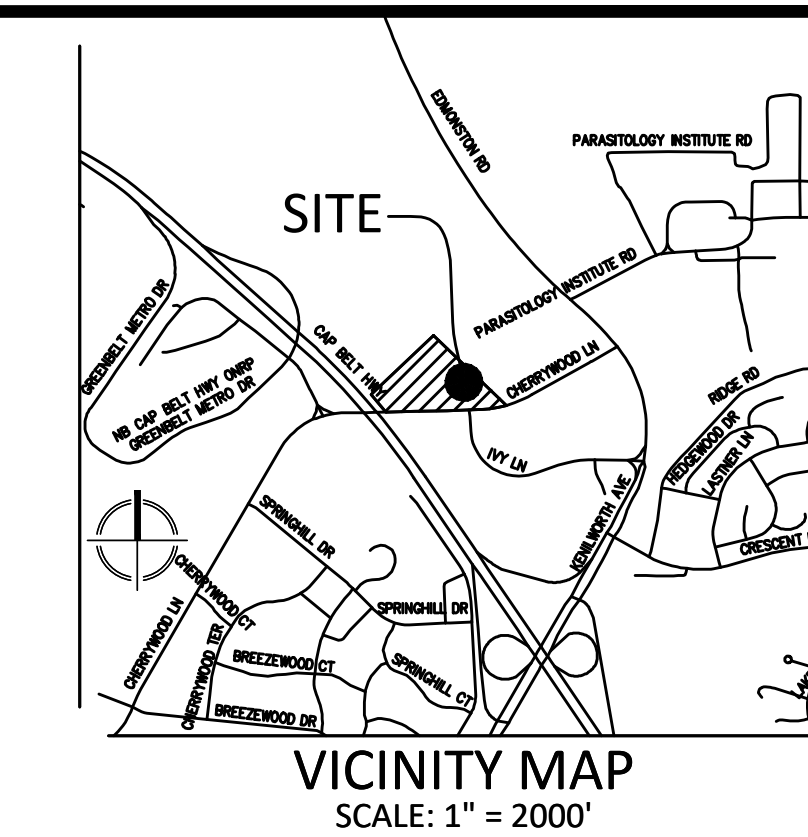


1 BUILDING 1000 - WEST ELEVATION
 1/16" = 1'-0"

FOR OFFICIAL USE ONLY
 OR later certifies that this plan meets conditions of final approval by the Planning Board, its designee or the District Council.
 M-NCCPC APPROVAL

PROJECT NAME: GREENBELT METRO
 PROJECT NUMBER: DSP-19014/00

For Conditions of Approval see Site Plan, Open Space or Approval Sheet
 Revision numbers must be included in the Project Number



VKA
ENGINEERS PLANNERS
LANDSCAPE ARCHITECTS SURVEYORS
VKA MARYLAND, LLC
20251 CENTURY BOULEVARD SUITE #400
GERMANTOWN, MARYLAND 20874
PHONE: (301) 916-4100
FAX: (301) 916-2262
TYSONS, VA.

PREPARED FOR:
THE NRP GROUP, LLC
1228 EUCLID AVENUE
4TH FLOOR
CLEVELAND, OH. 44115
216.584.0602
KARL ALT

DESIGN CONSULTANTS

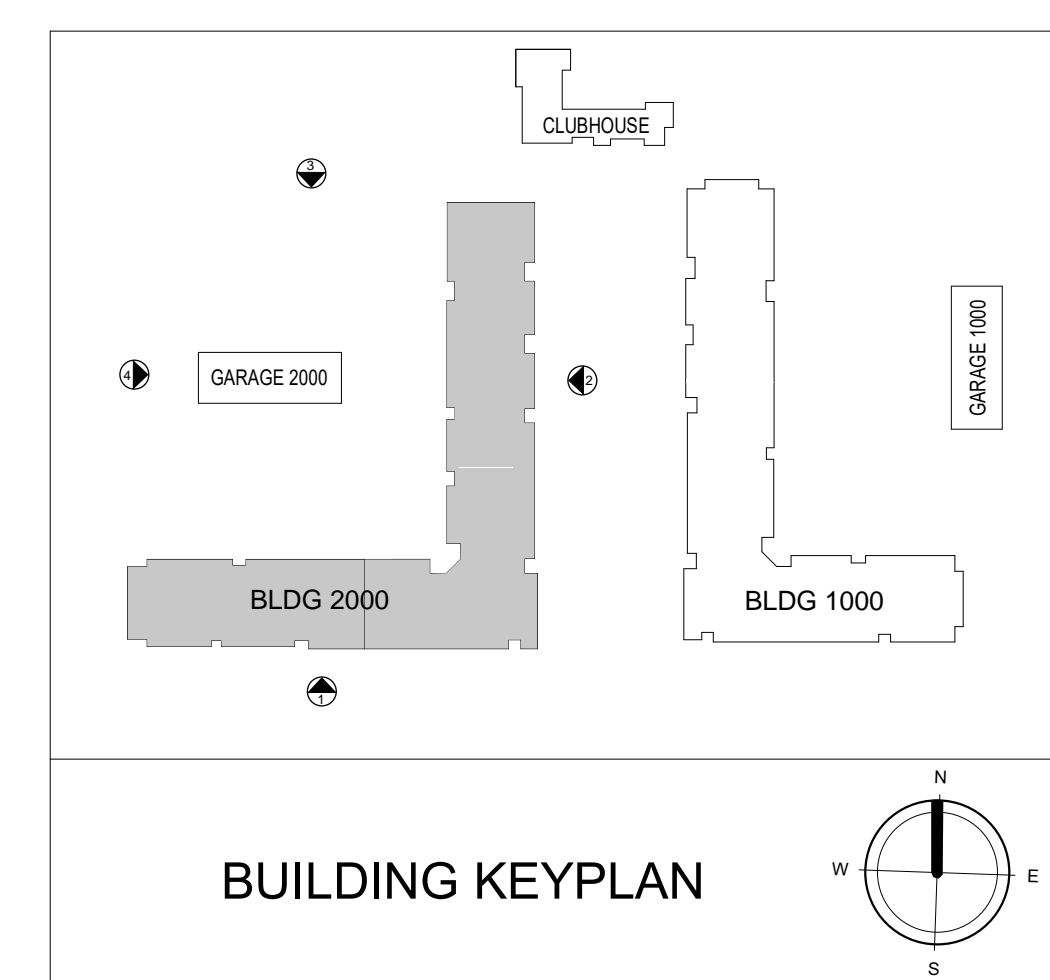
CIVIL ENGINEER
VKA MARYLAND, LLC
20251 CENTURY BOULEVARD
SUITE 400
GERMANTOWN MD. 20874
301.916.4100
DON NELSON, P.E.

ARCHITECT
DWELL DESIGN STUDIO, LLC
8200 GREENSBORO DRIVE
SUITE 650
MCLEAN, VA. 22102
571.253.6950
DON FLOOR III, RA

LANDSCAPE ARCHITECT
URBAN, LTD.
4200-D TECHNOLOGY COURT
CHANTILLY, VA. 20151
703.642.2260
ADAM STEINER, PLA

ATTORNEY
MCNAMEE HOSEA
6411 IVY LANE
SUITE 200
GREENBELT, MD. 20770
301.441.2420
MATTHEW TEDESCO

TRAFFIC ENGINEER
LENHART TRAFFIC CONSULTING, INC.
645 BALTIMORE BOULEVARD
SUITE 214
SEVERNA PARK, MD. 21146
410.216.333
MIKE LENHART



EXTERIOR FINISH LEGEND	
1.1	BRICK VENEER
1.2	PAINTED CONCRETE
2.1	CEMENTITIOUS PANEL WITH REVEAL 1
2.2	CEMENTITIOUS PANEL WITH REVEAL 2
2.3	CEMENTITIOUS PANEL WITH REVEAL 3
3.1	CEMENTITIOUS SIDING 1
3.2	CEMENTITIOUS SIDING 2
3.3	CEMENTITIOUS SIDING 3
3.4	CEMENTITIOUS SIDING 4
4.1	METAL PANEL 1
4.2	METAL PANEL 2
5.1	METAL BALCONY RAILING
5.2	STOREFRONT SYSTEM
5.3	ARCHITECTURAL SIGNAGE
5.4	METAL CANOPY
6.1	ASPHALT SHINGLE ROOF

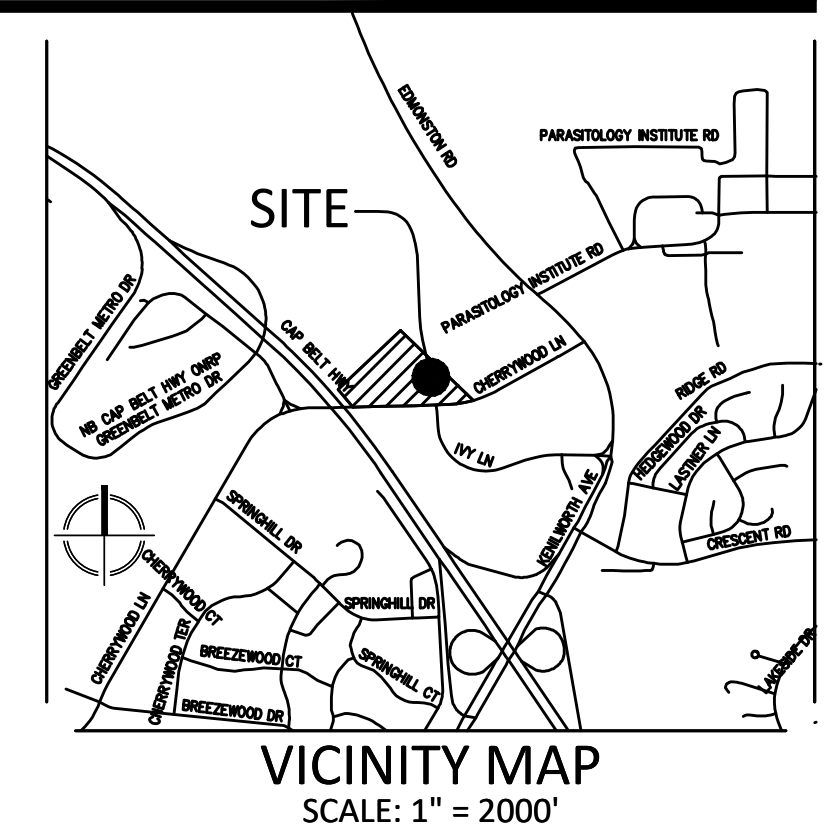
REVISIONS	DATE

PROFESSIONAL SEAL

GREENBELT METRO
21ST ELECTION DISTRICT
PRINCE GEORGE'S COUNTY,
MARYLAND
WSSC GRID: 212NE06
TAX MAP: 26-C2
MNCPPC
DSP-19014/00

BLDG 2000 ELEVATIONS

FOR OFFICIAL USE ONLY DR (b) certifies that this plan meets conditions of final approval by the Planning Board, its designee or the District Council. M-NCCPPC APPROVAL	PROJECT NAME: GREENBELT METRO PROJECT NUMBER: DSP-19014/00
For Conditions of Approval see Site Plan Cover Sheet or Approval Sheet Revision numbers shall be included in the Project Number.	DRAWN BY: _____ DESIGNED BY: _____ DATE ISSUED: _____ VKA PROJECT DRAWING NO. SHEET NO. DSP-32



VICINITY MAP
SCALE: 1" = 2000'

DESIGN CONSULTANTS

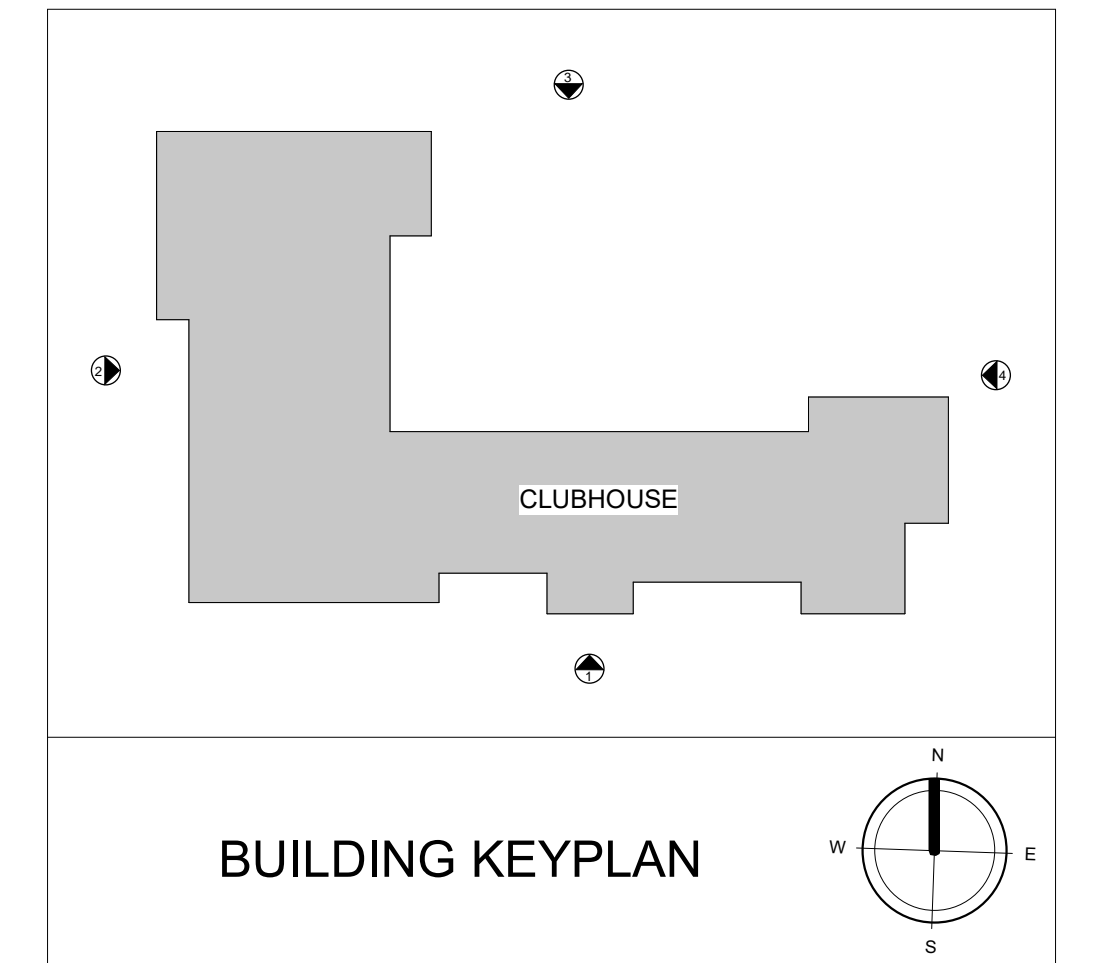
CIVIL ENGINEER
VKA MARYLAND, LLC
20251 CENTURY BOULEVARD
SUITE 400
GERMANTOWN MD. 20874
301.916.4100
DON NELSON, P.E.

ARCHITECT
DWELL DESIGN STUDIO, LLC
8200 GREENSBORO DRIVE
SUITE 650
MCLEAN, VA. 22102
571.253.6950
DON FOOR III, RA

LANDSCAPE ARCHITECT
URBAN, LTD.
4200-D TECHNOLOGY COURT
CHANTILLY, VA. 20151
703.642.2280
ADAM STENNER, PLA

ATTORNEY
MENAMÉE HOSEA
SUITE 200
GREENBELT, MD. 20770
301.441.2420
MATTHEW TEDESCO

TRAFFIC ENGINEER
LENHART TRAFFIC CONSULTING, INC.
645 BALTIMORE BOULEVARD
SUITE 214
SEENA PARK, MD. 21146
410.216.333
MIKE LENHART



BUILDING KEYPLAN

EXTERIOR FINISH LEGEND	
1.3	GROUND FACE CMU
2.2	CEMENTITIOUS PANEL WITH REVEAL 2
2.3	CEMENTITIOUS PANEL WITH REVEAL 3
2.4	CEMENTITIOUS PANEL WITH REVEAL 4
2.5	CEMENTITIOUS PANEL WITH REVEAL 5
3.3	CEMENTITIOUS SIDING 3
5.4	METAL CANOPY
6.1	ASPHALT SHINGLE ROOF

REVISIONS	DATE

PROFESSIONAL SEAL

GREENBELT METRO
21ST ELECTION DISTRICT
PRINCE GEORGE'S COUNTY,
MARYLAND
WSSC GRID: 212NE06
TAX MAP: 26-C2
MNCPPC
DSP-19014/00

CLUBHOUSE ELEVATIONS

DRAWN BY: _____
DESIGNED BY: _____
DATE ISSUED: _____
VKA
PROJECT
DRAWING NO.
SHEET NO. DSP-34

FOR OFFICIAL USE ONLY Official certifies that this plan meets conditions of final approval by the Planning Board, its designee or the District Council. M-NCPCC APPROVAL	
PROJECT NAME: GREENBELT METRO	
PROJECT NUMBER: DSP-19014/00	
For Conditions of Approval see Site Plan Cover Sheet or Approval Sheet Revision numbers must be included in the Project Number.	



4 EAST ELEVATION
1/8" = 1'-0"

3 NORTH ELEVATION
1/8" = 1'-0"

2 WEST ELEVATION
1/8" = 1'-0"

1 SOUTH ELEVATION
1/8" = 1'-0"