



1



2

# ARPA Overview



3

3

## ARPA Basics

- \$362 billion for state, local, territorial, and Tribal governments to respond to the COVID-19 pandemic and bring back jobs
- Greenbelt is a direct recipient of ARPA funds
  - › \$22.88 million allocation
  - › Half received to date – remainder next year
- Available for costs incurred between March 3, 2021, and December 31, 2024
  - › Funds must be obligated by December 31, 2024 or expended by December 31, 2026 or returned to Treasury

4

4

## Federal Funding Objectives

- **Support urgent COVID-19 response efforts** to continue to decrease the spread of the virus and bring the pandemic under control
- **Replace lost public sector revenue** to strengthen support for vital public services and help retain jobs
- **Support immediate economic stabilization** for households and businesses
- **Address systemic public health and economic challenges** that have contributed to the inequal impact of the pandemic

5

5

## Eligible Uses



### Support Public Health Response

- Fund COVID-19 mitigation efforts, medical expenses, behavioral healthcare, and certain public health and safety staff



### Address Negative Economic Impacts

- Respond to economic harms to workers, families, small businesses, impacted industries, and the public sector



### Replace Public Sector Revenue Loss

- Use funds to provide government services to the extent of the reduction in revenue experienced due to the pandemic



### Premium Pay for Essential Workers

- Offer additional support to those who have and will bear the greatest health risks because of their service in critical infrastructure sectors



### Water and Sewer Infrastructure

- Make necessary investments to improve access to clean drinking water and invest in wastewater and stormwater infrastructure



### Broadband Infrastructure

- Make necessary investments to provide unserved or underserved locations with new or expanded broadband access

6

6

## Additional Considerations

### Equity-Focused Services

- **Additional flexibility for the hardest-hit communities and families** to address health disparities, invest in housing, address educational disparities, and promote healthy childhood environments
- Requires evidence to support the determination of disproportionate impact

### Ineligible Uses

- Changes that reduce net tax revenue
- Extraordinary payments into a pension fund
- Debt service

### Evolving Requirements

- Treasury guidance is subject to change as program evolves

7

7

# Community Engagement Plan

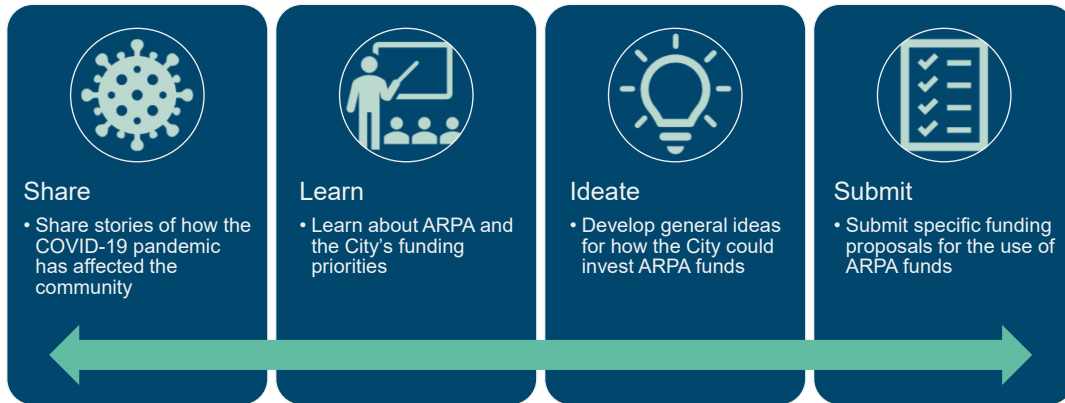


8

8

## ARPA Community Engagement Plan

The goal of the City's ARPA Community Engagement Plan is to provide multiple, varied opportunities for the Greenbelt community to:



9

9

## Community Engagement Opportunities



10

10

## ARPA Investment Framework



### Guiding Principles

- Ensure funds are invested strategically
- Based on industry best practices (GFOA)
- Comply with eligibility requirements



### Funding Priorities

- Reflect the community's needs and priorities
- Guided by the Council's 2021 Workplan – outcomes and top priorities



### Evaluation Methodology

- Framework for categorizing specific funding proposals
- Evaluation criteria reflect Funding Priorities and Guiding Principles

11

11

# Discussion



12

12



# Thank you!

**Contact:** Michelle Ferguson  
828 777 6588 / [mferguson@raftelis.com](mailto:mferguson@raftelis.com)

13