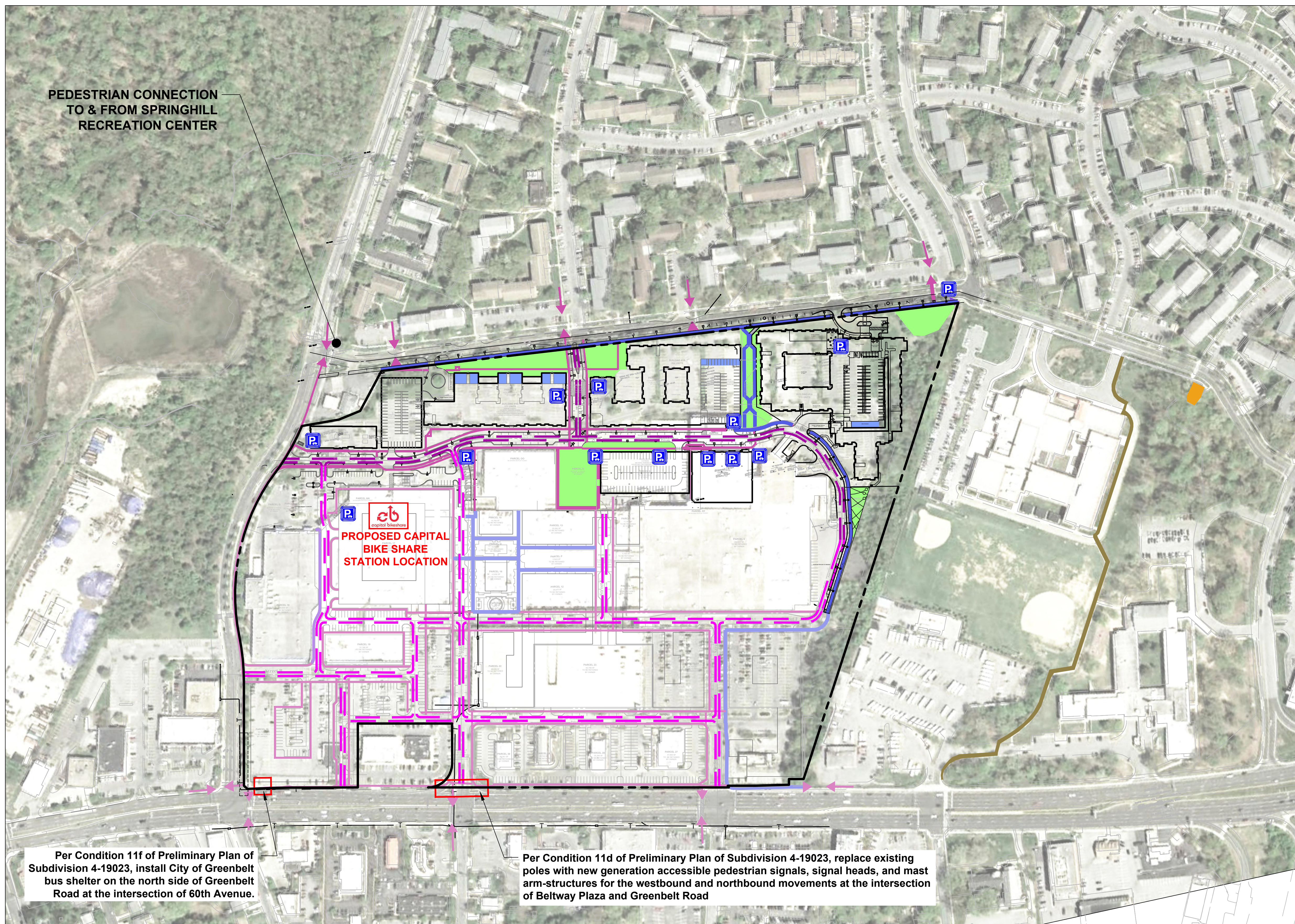


PEDESTRIAN CIRCULATION EXHIBIT

BELTWAY PLAZA



LEGEND

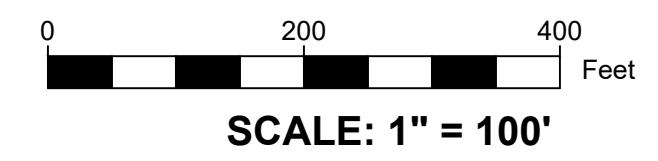
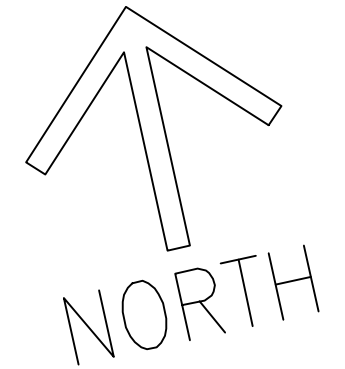
- 5-6' WIDTH SIDEWALK
- 7-8' WIDTH SIDEWALK
- 10'+ WIDTH SIDEWALK
- 5-6' WIDTH SIDEWALK FUTURE PHASES
- 7-8' WIDTH SIDEWALK FUTURE PHASES
- 10'+ WIDTH SIDEWALK FUTURE PHASES
- EXISTING TRAIL
- BICYCLE LOCKERS
- EXISTING PLAYGROUND
- SHARED USE ROADWAYS
- SHARED USE ROADWAYS FUTURE PHASE
- P BICYCLE PARKING
- PHASE 1**
AMENITY AREAS

PEDESTRIAN CONNECTION TO & FROM SPRINGHILL RECREATION CENTER

PROPOSED CAPITAL BIKE SHARE STATION LOCATION

Per Condition 11f of Preliminary Plan of Subdivision 4-19023, install City of Greenbelt bus shelter on the north side of Greenbelt Road at the intersection of 60th Avenue.

Per Condition 11d of Preliminary Plan of Subdivision 4-19023, replace existing poles with new generation accessible pedestrian signals, signal heads, and mast arm-structures for the westbound and northbound movements at the intersection of Beltway Plaza and Greenbelt Road



REVISION	DATE	REVISION	DATE

Owner/Developer:
GB Mall Limited Partnership c/o Quantum Co.
The Quantum Building
4912 Del Ray Avenue
Bethesda, MD 20814

BELTWAY PLAZA

ELECTION DISTRICT No. 21
 PRINCE GEORGE'S COUNTY, MARYLAND
 TAX MAP 26, 34 GRID A1, A4, B1, B4, C4
 200 FOOT MAP 210NE05, 210NE06, 211NE05, 211NE06

RODGERS CONSULTING

19847 Century Boulevard, Suite 200, Germantown, Maryland 20874
 Ph: 301.948.4700 Fx: 301.948.6256 www.rodgers.com

	BY	DATE
BASE DATA		
DESIGNED		
DRAWN		
REVIEWED		
RODGERS CONTACT:		
RELEASE FOR		
BY		

PEDESTRIAN CIRCULATION EXHIBIT

SCALE: 1" = 100'
JOB No. 1287A
DATE: SEPT 2020
SHEET No. 1 OF 1