

# Welcome!

## Buddy Attick Park Master Plan City Council Work Session

January 31, 2024



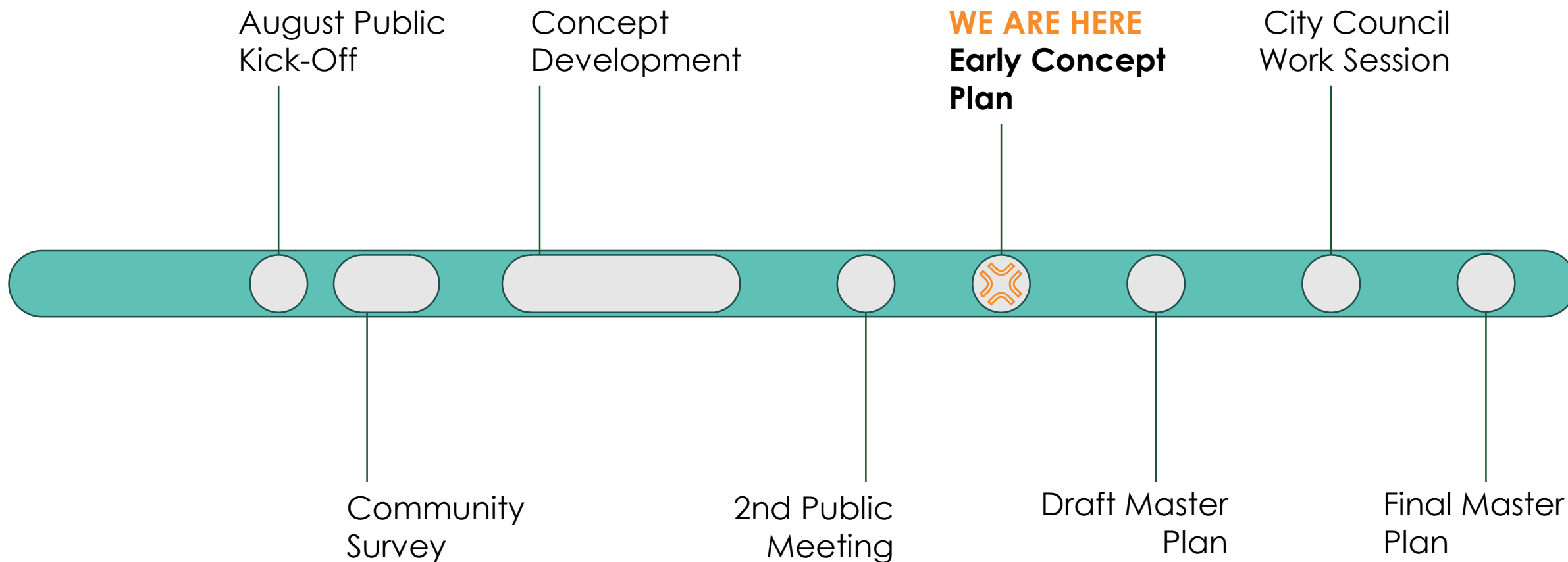
# Tonight's Meeting

- Introduction
- Presentation
- City Council Discussion
- Next Steps

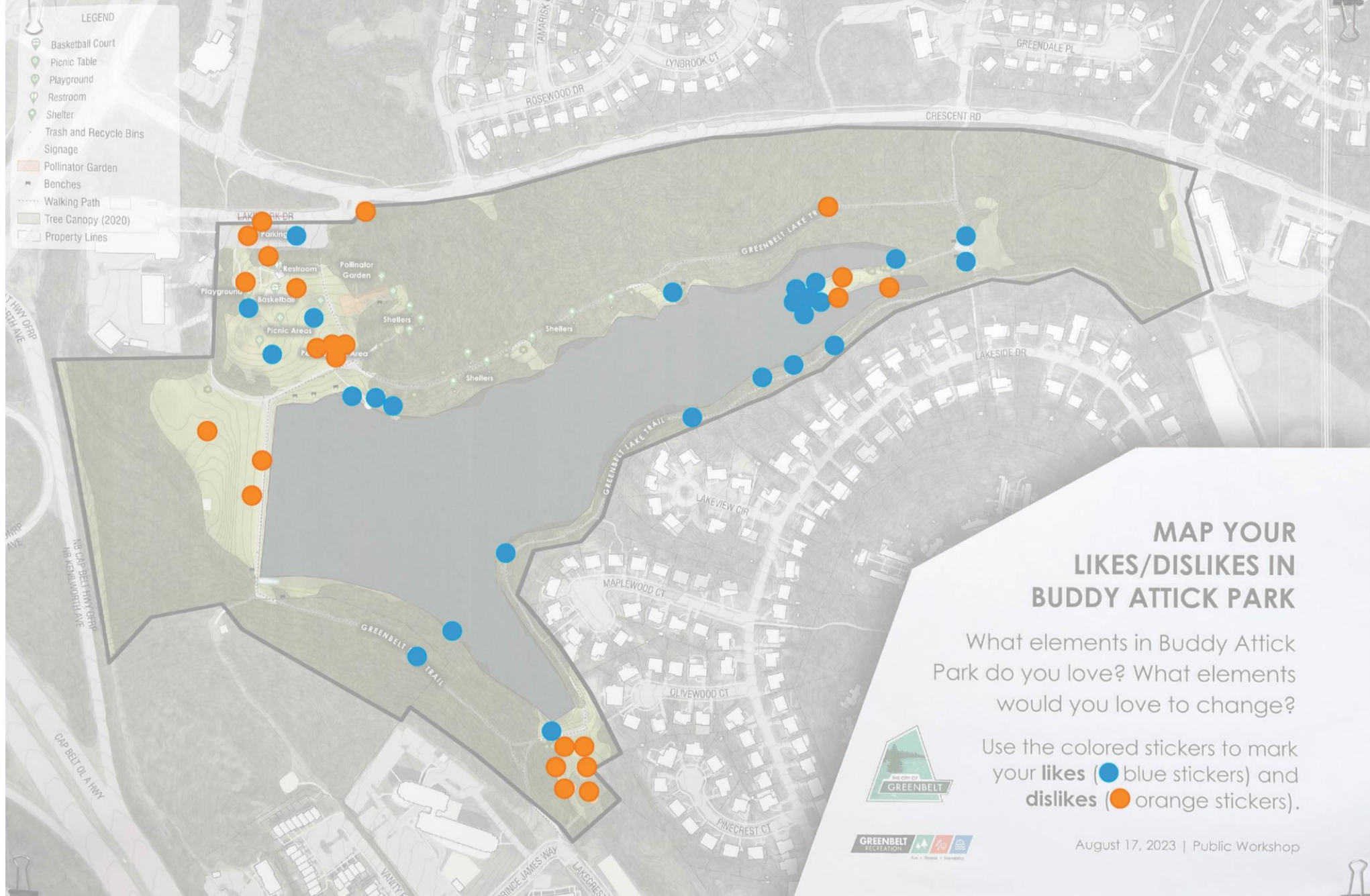
# Master Plan Purpose

Provide a vision and accompanying strategic plan for the future utilization of Buddy Attick Park that will guide short- and long-term improvements, protect the park's natural resources, and improve management practices.

# Process Outline



# Community Input



## MAP YOUR LIKES/DISLIKES IN BUDDY ATTICK PARK

What elements in Buddy Attick Park do you love? What elements would you love to change?

Use the colored stickers to mark your **likes** (● blue stickers) and **dislikes** (● orange stickers).



August 17, 2023 | Public Workshop

# What are the 3 most SACRED THINGS about Buddy Attick Park for you and/or your household?

71 Responses



# GUIDING PRINCIPLES: Please provide 3-5 PRIORITIES that you feel are important to the overall success of Buddy Attick Park.

73 Responses





# What do you feel is CURRENTLY MISSING from the park that you would like to see?

54 Responses

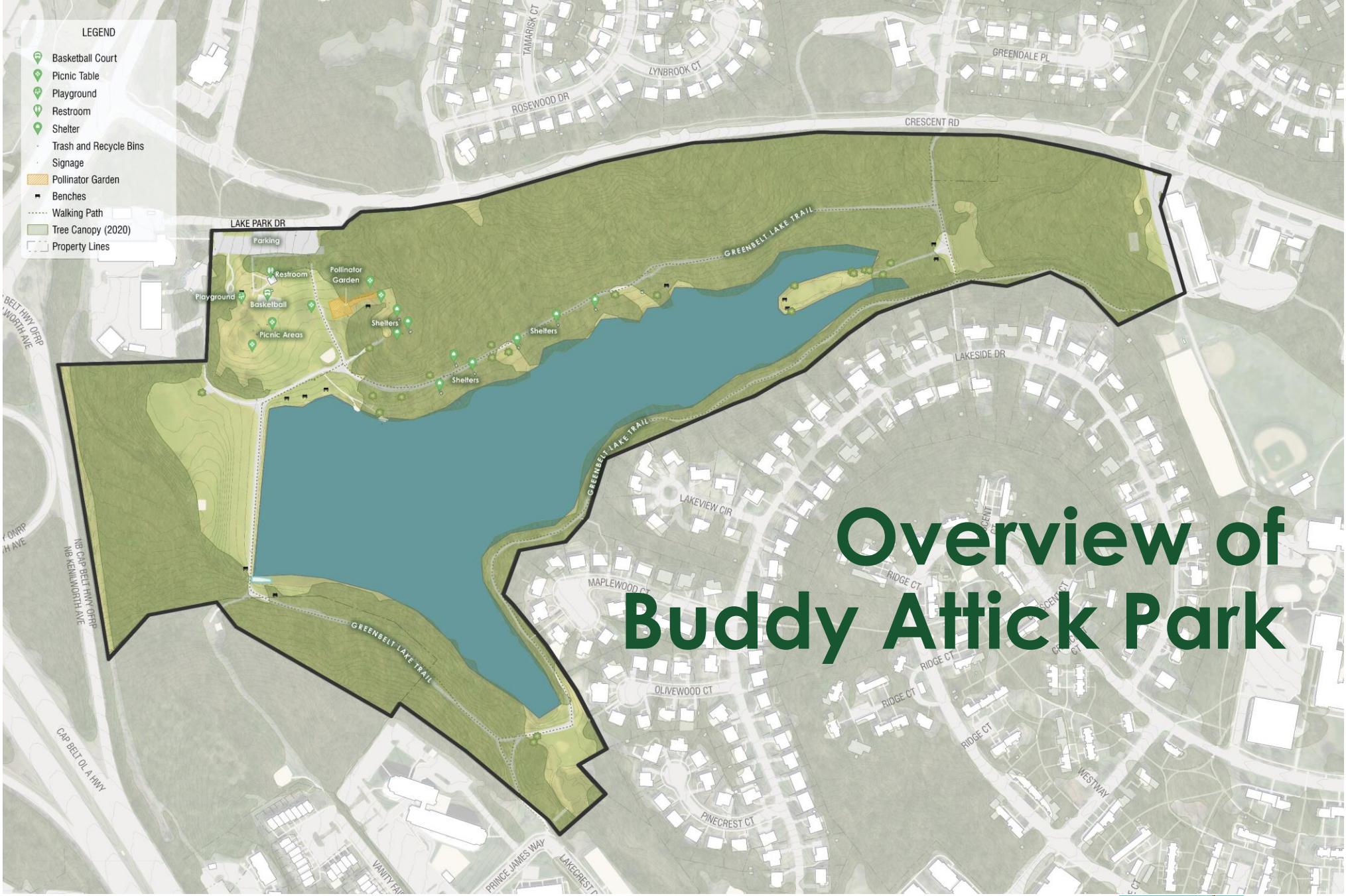


# Online Survey Results

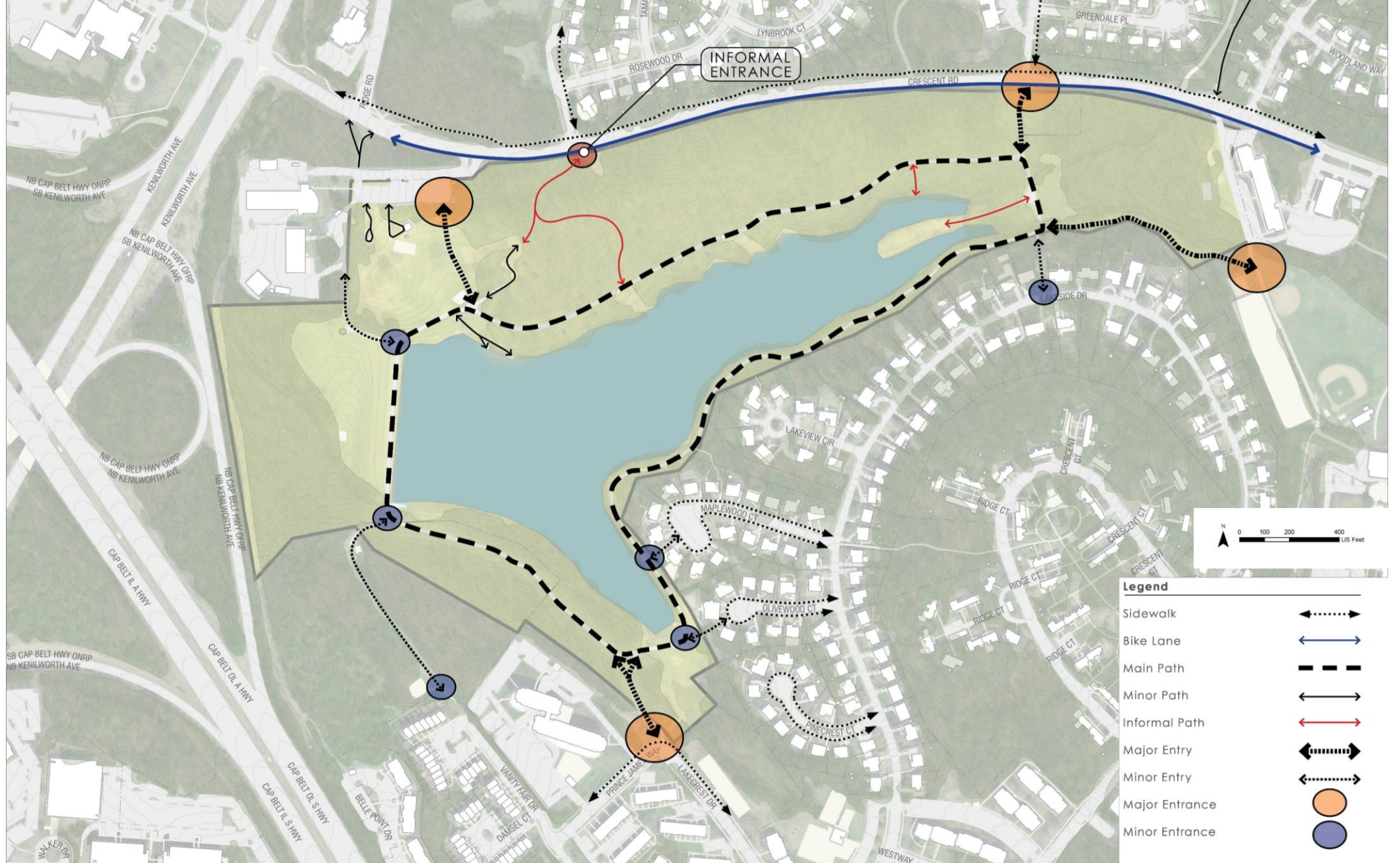
Community survey was open from August 23 through October 1 in both English and Spanish. The survey received a total of 581 responses.

## SURVEY HEADLINES

- The majority of respondents visited daily or once a week
- The top 3 reasons for visiting the park were: Physical Activity, Walking, and Dog Walking
- Experiencing nature / lake rated the most total responses
- Over 50% of the respondents live adjacent to or within ¼ mile of the park
- The overall condition was highly ranked as excellent to good
- Safety was indicated as a concern by a third of respondents



# Overview of Buddy Attick Park

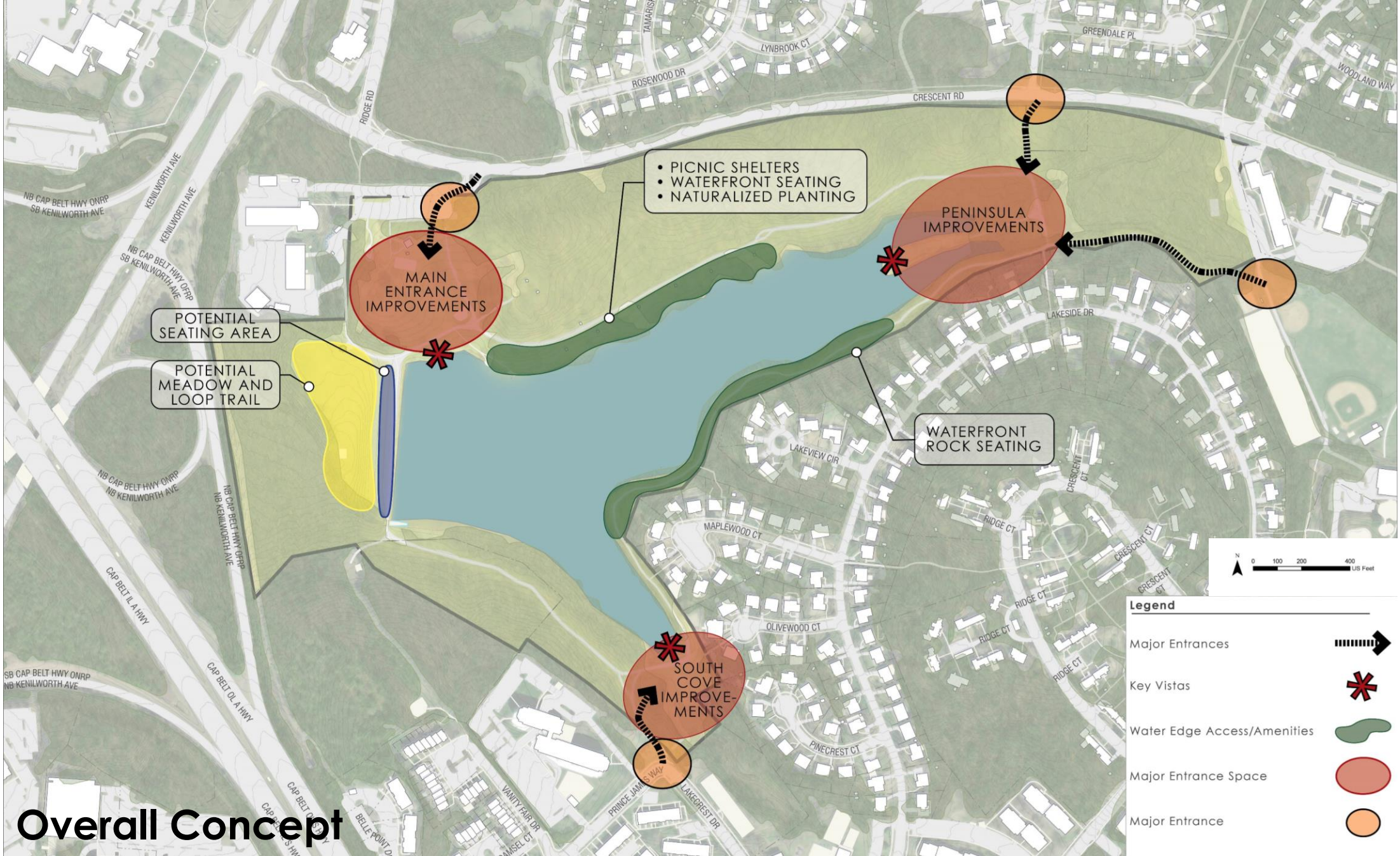


# Existing Circulation

# Emerging Ideas



# Proposed Circulation Enhancements



# Overall Concept

- PICNIC SHELTERS
- WATERFRONT SEATING
- NATURALIZED PLANTING

PENINSULA IMPROVEMENTS

WATERFRONT ROCK SEATING

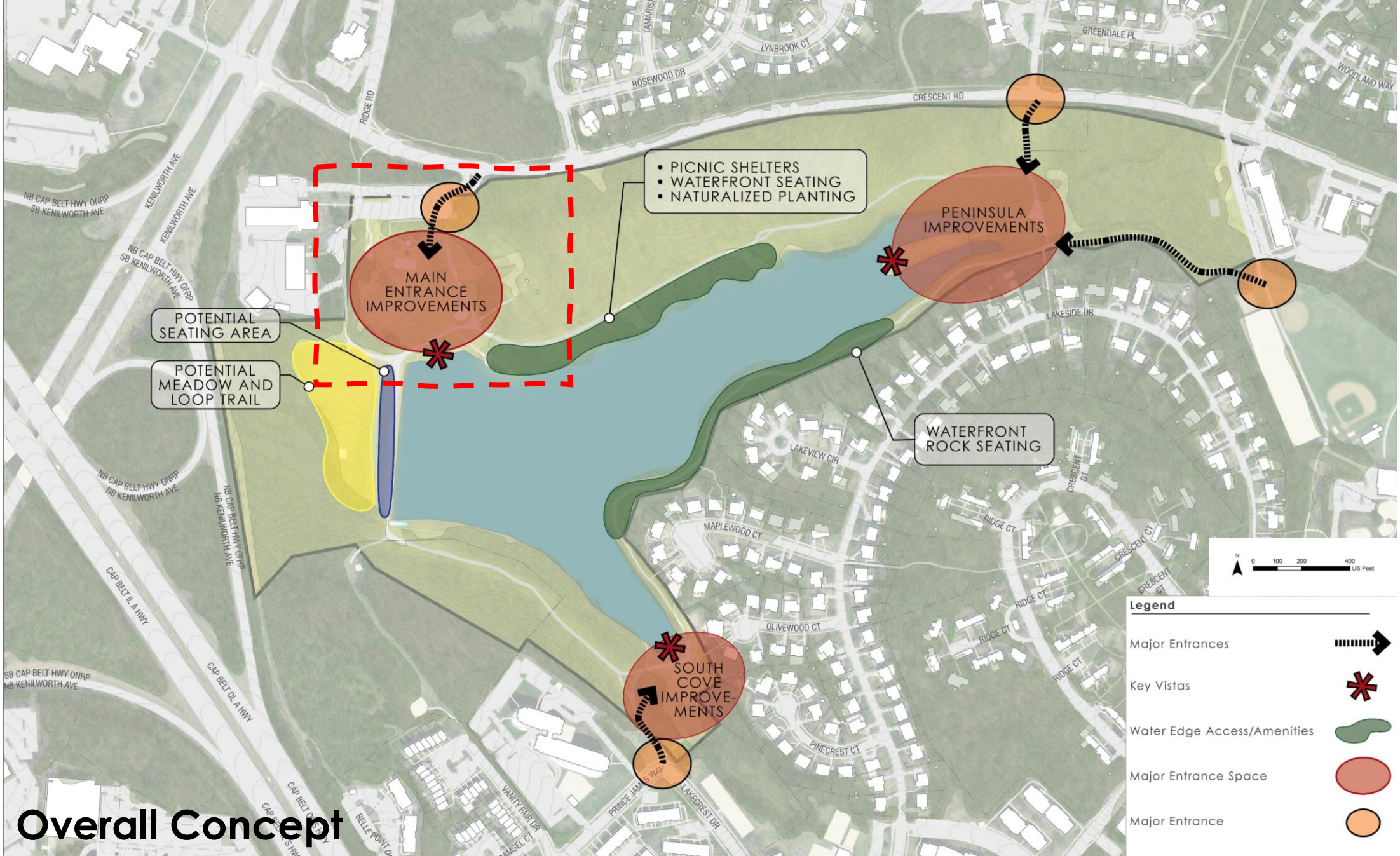
SOUTH COVE IMPROVEMENTS

POTENTIAL SEATING AREA

POTENTIAL MEADOW AND LOOP TRAIL



Legend	
Major Entrances	
Key Vistas	
Water Edge Access/Amenities	
Major Entrance Space	
Major Entrance	



# Overall Concept





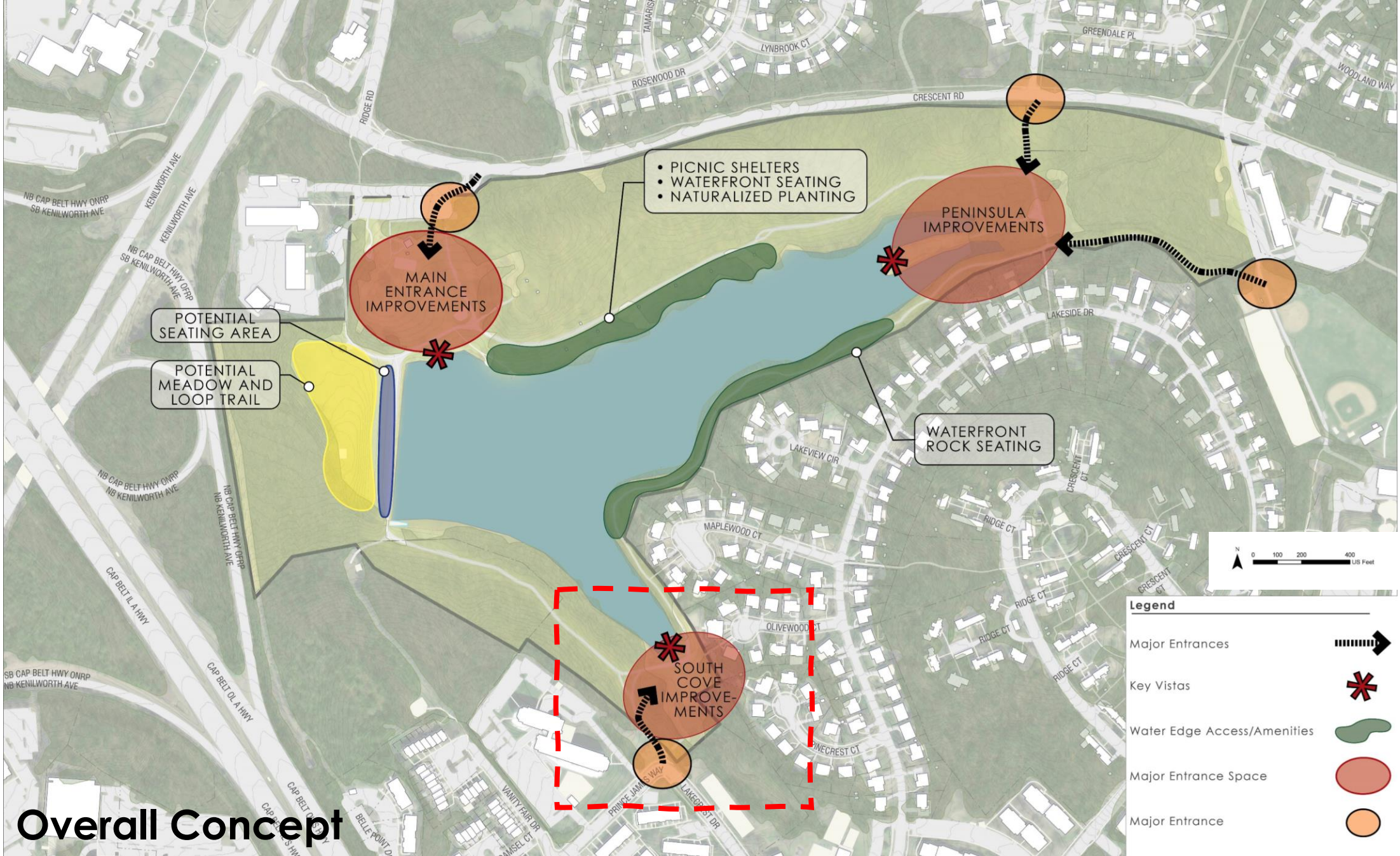
### Legend:

- (A) Lawn
- (B) Meadow
- (C) New Playground
- (D) Existing Playground
- (E) Existing Basketball Court
- (F) Existing Trees to Remain
- (G) Picnic Shelters
- (H) Picnic Tables
- (I) Performance Stage
- (J) Proposed Planting Areas
- (K) Fishing Pier
- (L) New and/or Improved Pathway
- (M) Seating Along Lakefront Promenade



## Main Entrance Concept Plan





- PICNIC SHELTERS
- WATERFRONT SEATING
- NATURALIZED PLANTING

POTENTIAL SEATING AREA

POTENTIAL MEADOW AND LOOP TRAIL

MAIN ENTRANCE IMPROVEMENTS

PENINSULA IMPROVEMENTS

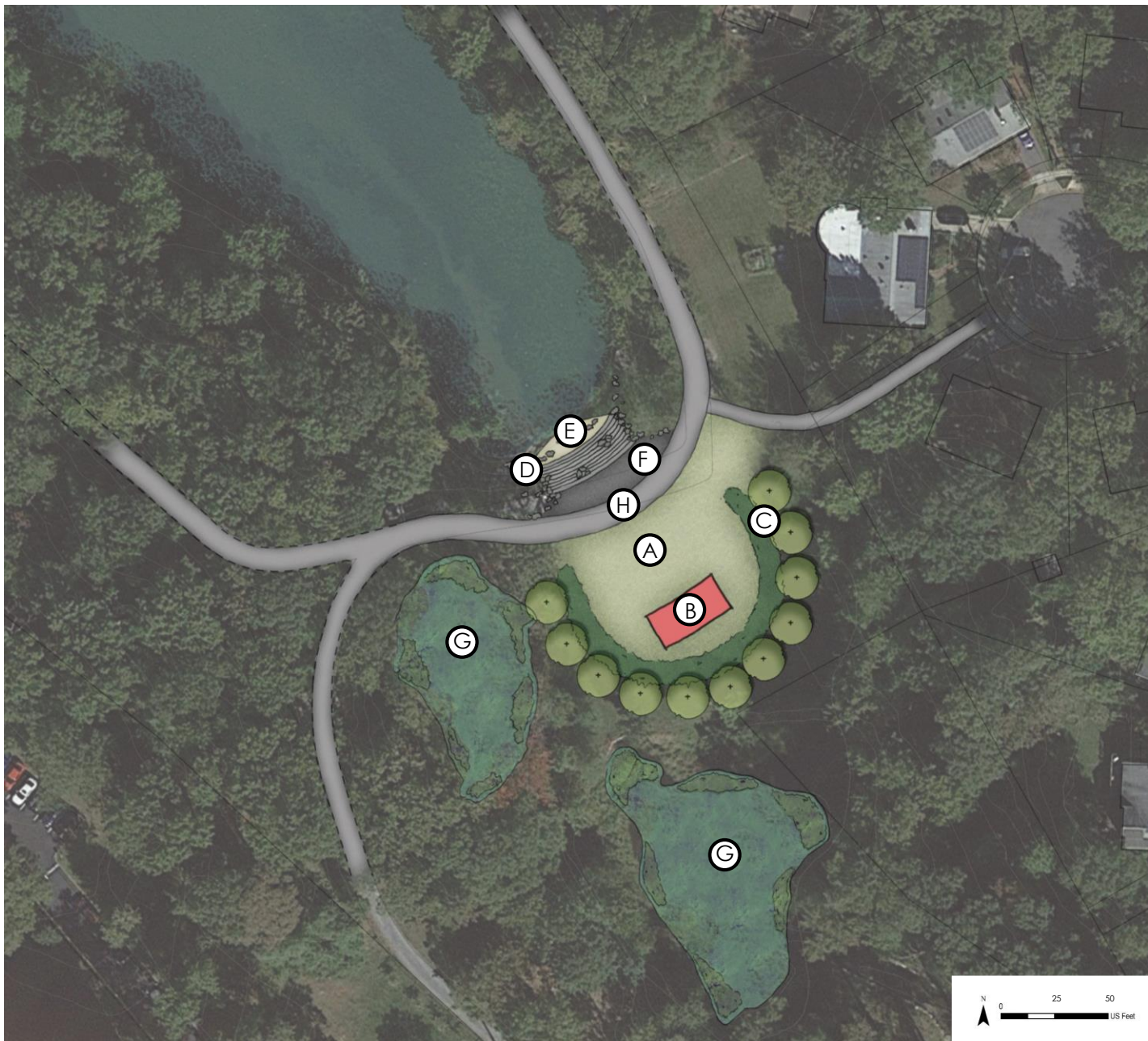
WATERFRONT ROCK SEATING

SOUTH COVE IMPROVEMENTS

# Overall Concept



Legend	
Major Entrances	
Key Vistas	
Water Edge Access/Amenities	
Major Entrance Space	
Major Entrance	

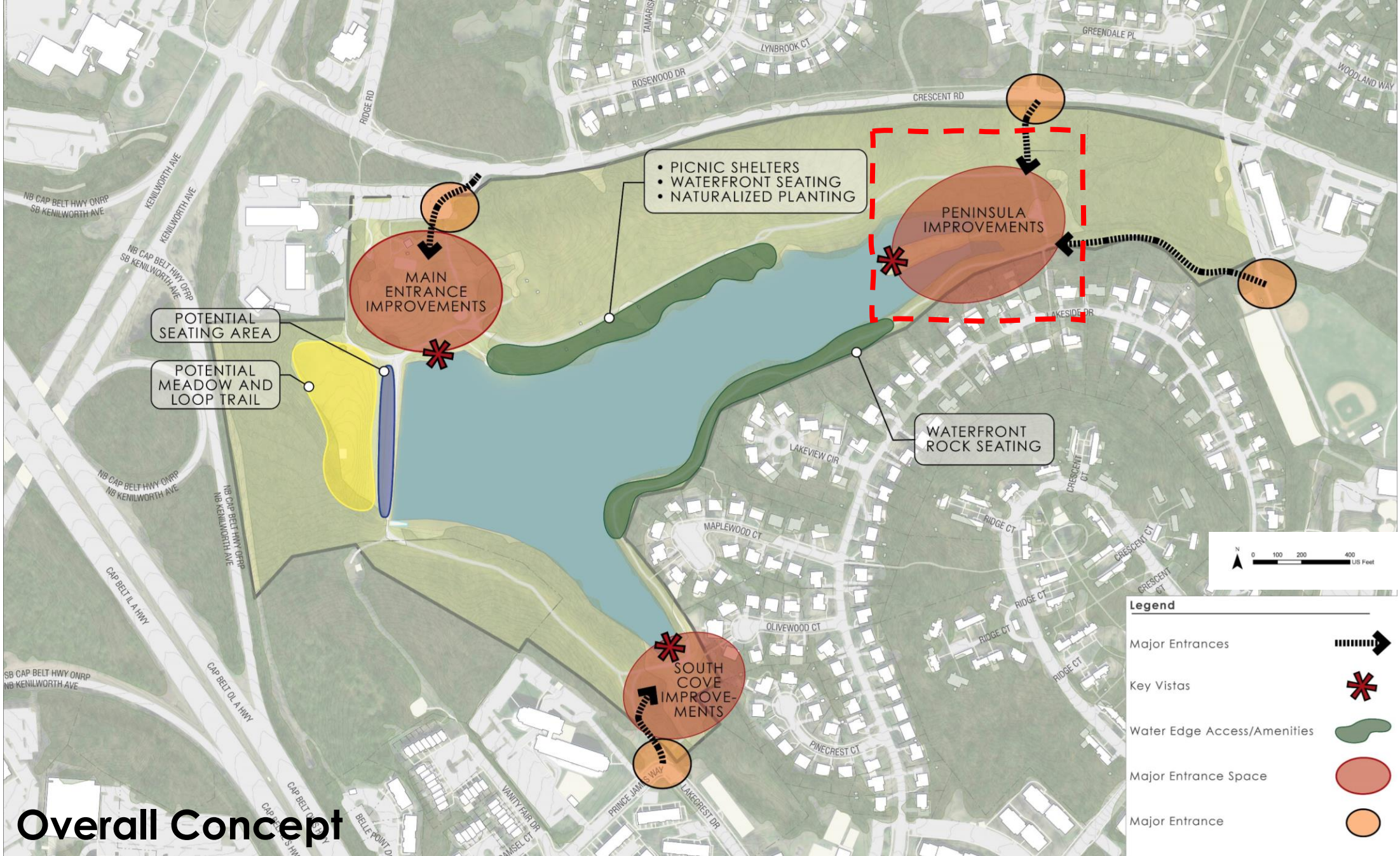


**Legend:**

- (A) Lawn
- (B) Pavilion
- (C) Proposed Planting Area
- (D) Stepped Terrace
- (E) Lakefront Seating Area
- (F) Accessible Seating Area
- (G) Wetland Planting/ Restoration Area
- (H) Realigned Pathway



**South Cove Concept Plan**



# Overall Concept

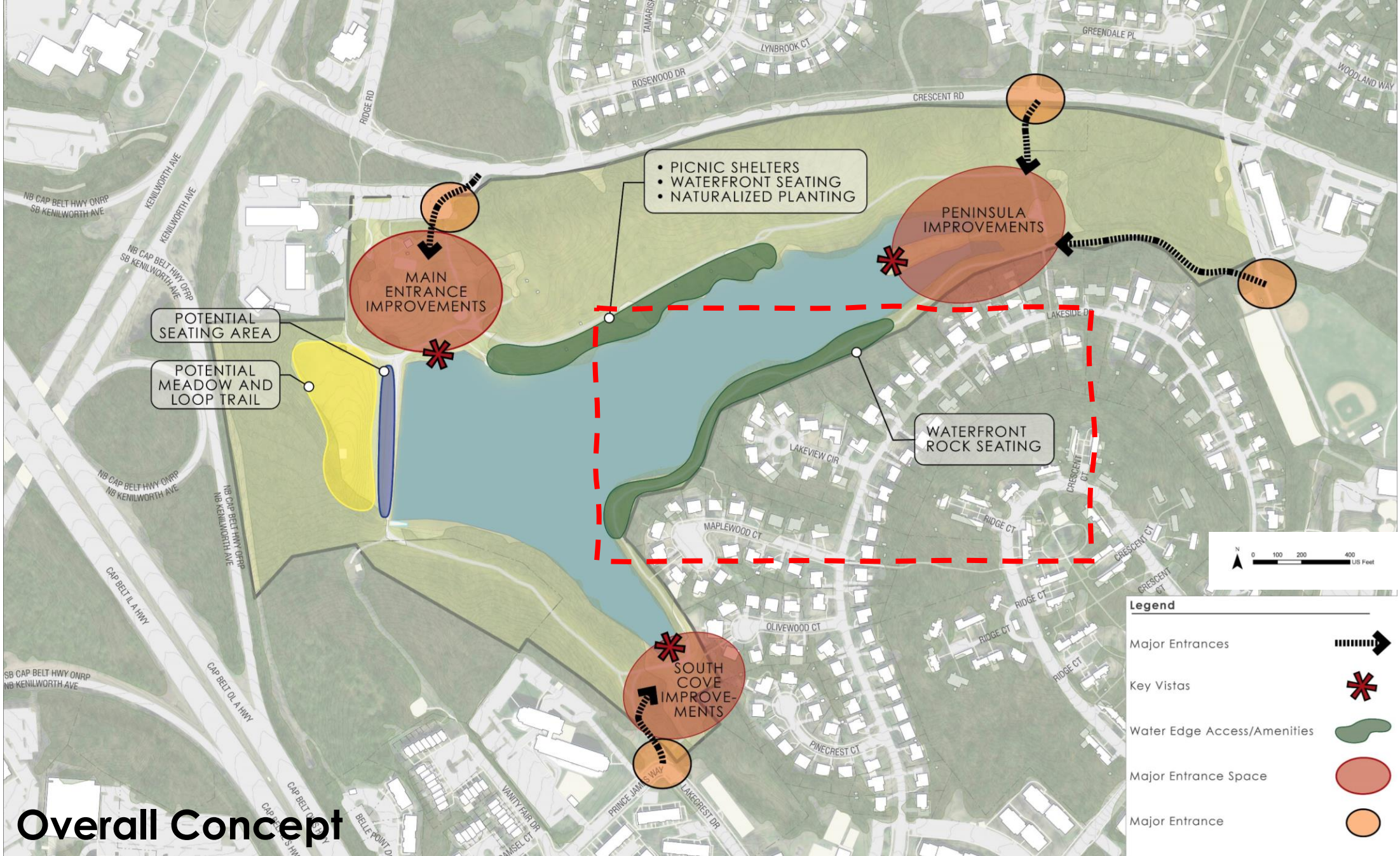


**Legend:**

- (A) Lakeside Rock Seating
- (B) Proposed Planting Area
- (C) Overlook Deck
- (D) Gathering / Seating Area
- (E) Existing Bridge
- (F) Pathway Improved/Extended



**Peninsula Concept Plan**



# Overall Concept

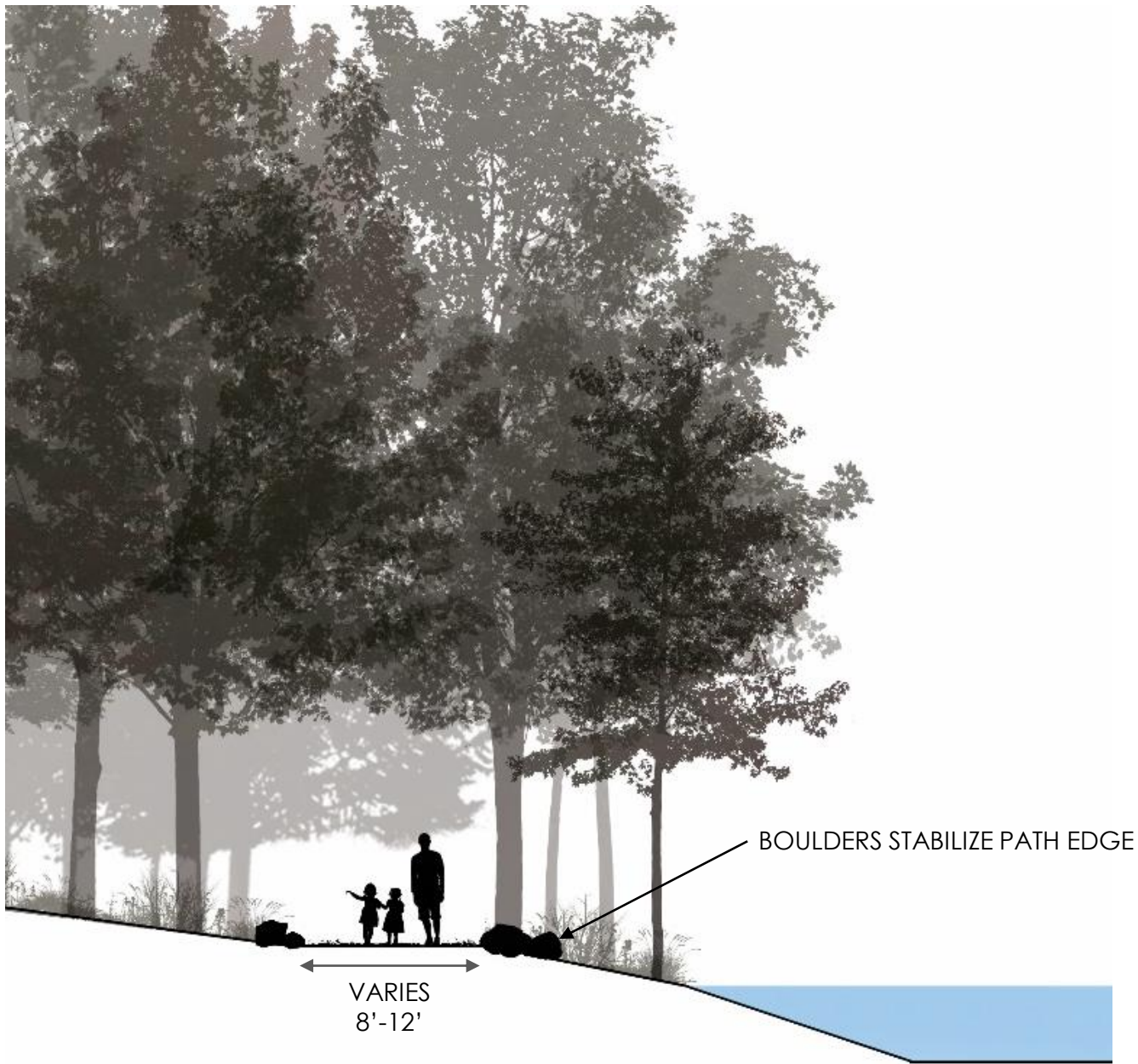
**Legend**

Major Entrances	
Key Vistas	
Water Edge Access/Amenities	
Major Entrance Space	
Major Entrance	

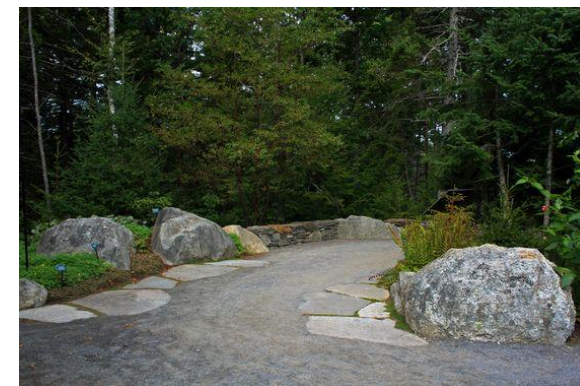
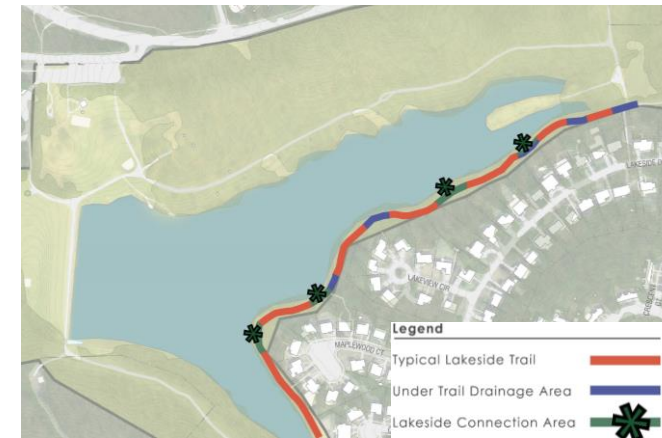


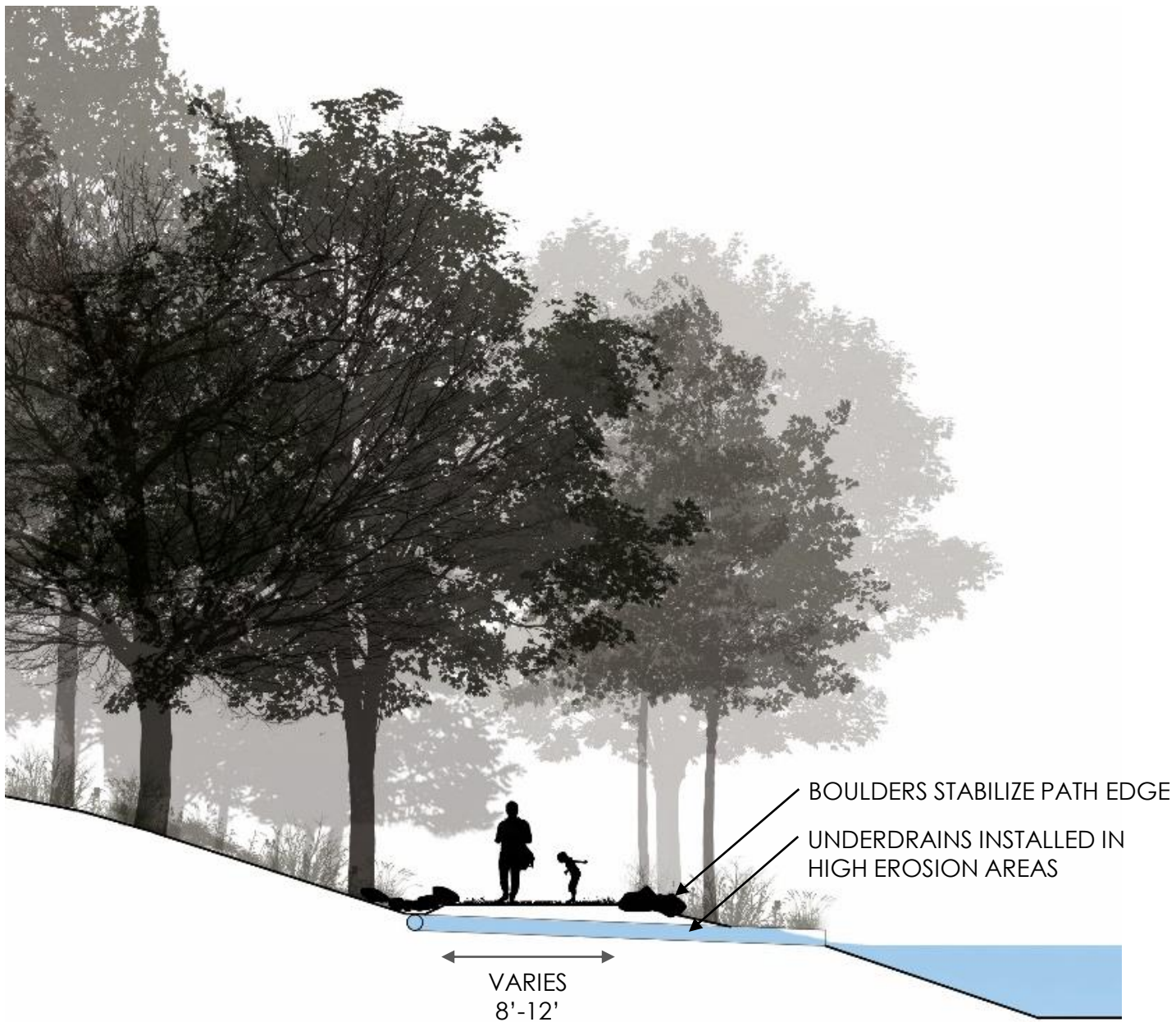
# Edge Conditions Diagram



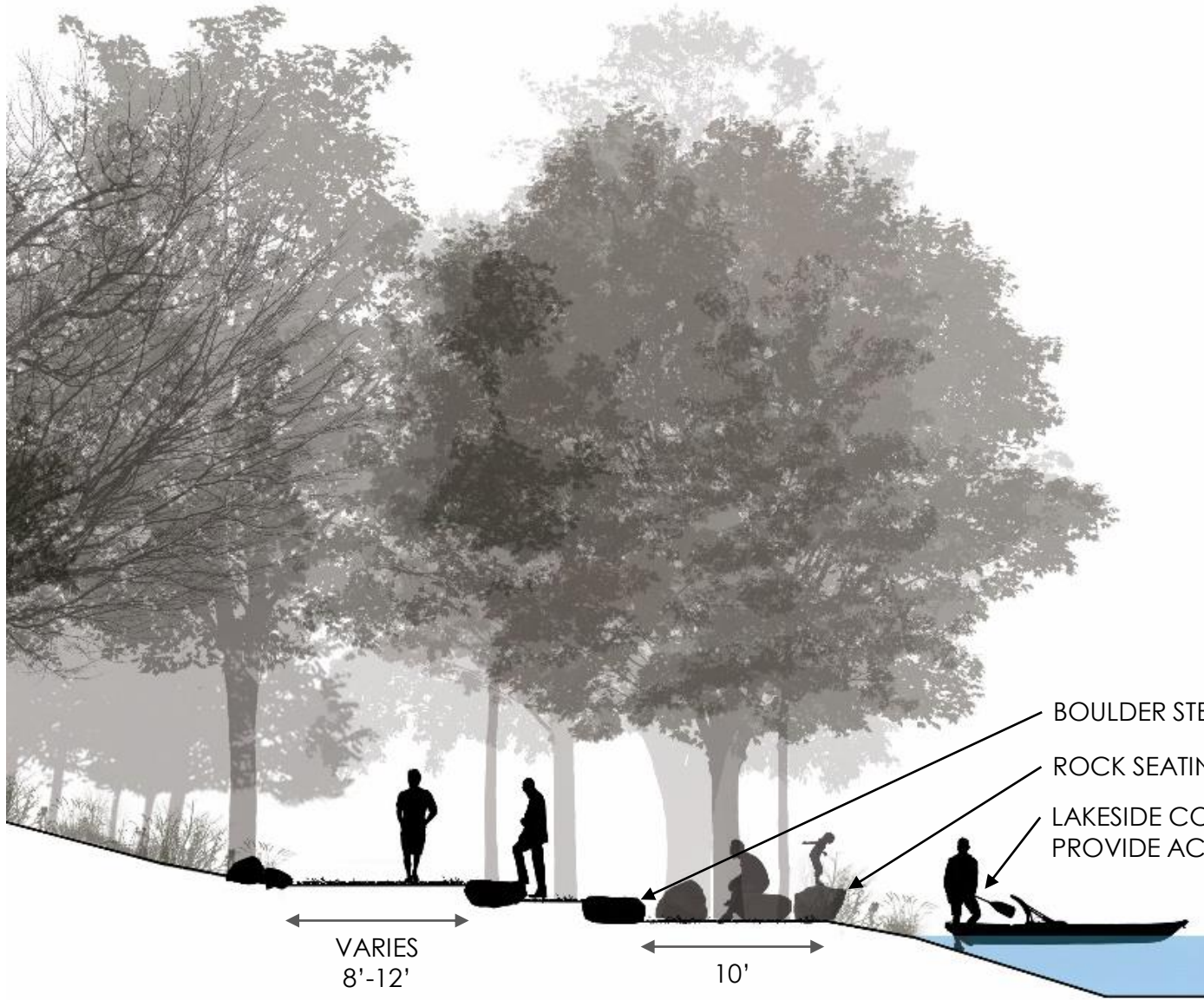


## Edge Conditions – Typical Lakeside Trail





# Edge Conditions – Under Trail Drainage Area



BOULDER STEPS TO LAKESIDE CONNECTION AREA

ROCK SEATING AT LAKEFRONT

LAKESIDE CONNECTION AREAS PROVIDE ACCESS TO WATER

# Edge Conditions – Lakeside Connection Area





STONE DUST



ASPHALT



POROUS ASPHALT (PorousPave XL or Similar)

## Trail Materials Options

# Discussion

# Closing and Next Steps

# Process Outline

