



*Martin O'Malley, Governor*  
*Anthony G. Brown, Lt. Governor*  
*Joseph P. Gill, Secretary*  
*Frank W. Dawson III, Deputy Secretary*

June 6, 2013

City of Greenbelt  
Public Works Department  
555 Crescent Road  
Greenbelt, MD 20770

Dear City of Greenbelt:

Enclosed is the Forest Stewardship Plan that was prepared for your property by a Licensed Forester, a Wildlife Biologist, and a Heritage Ecologist. They have worked together to develop this plan with your goals in mind. The Wildlife Biologist focuses on methods to enhance wildlife habitat; the Heritage Ecologist focuses on conserving special habitats for rare plant and animals; and the Licensed Forester focuses on maintaining the health, vigor and reproduction of the woodland through multiple use resource management techniques and the actual on-the-ground implementation of this Plan.

The State provides this service because maintaining and enhancing forest health is critical to the success of the Chesapeake Bay restoration efforts. However, no matter how detailed the plan, the success of implementing it rests with you. Your role is ultimately the most important part of the process. In order to take advantage of a reduced property tax assessment program you must submit a copy of the Forest Stewardship Plan and an Agricultural Use application to the County Assessment office.

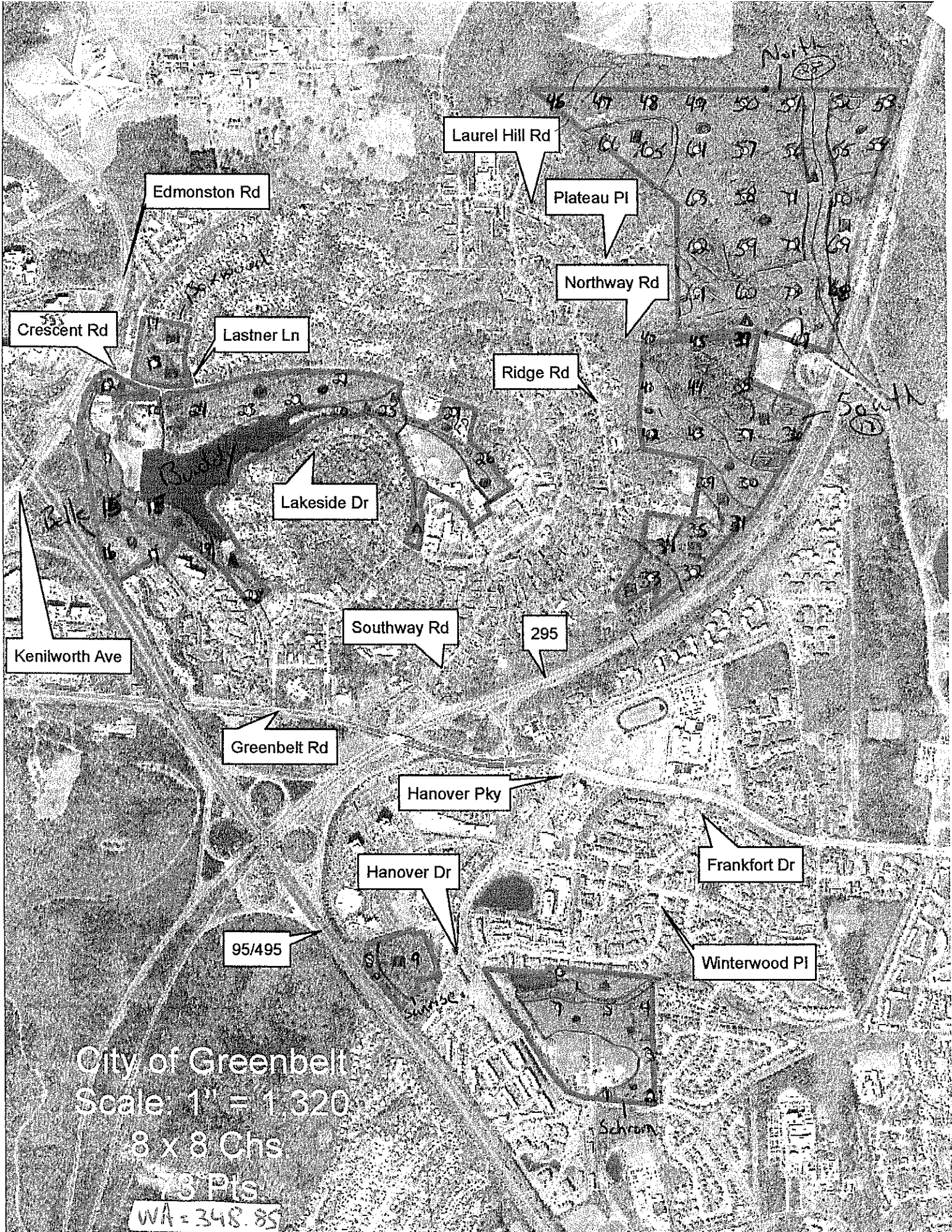
With these facts in mind, I encourage you to make a positive impact in maintaining Maryland's forestland and restoring the Chesapeake Bay by implementing the practices recommended in your plan. I also hope you will continue to take advantage of the assistance provided by the Department of Natural Resources. I appreciate the opportunity to have worked with you in preparing this Stewardship Plan for your woodland and hope you find your future forest management efforts rewarding.

Sincerely,

Brian J. Stupak  
Project Manager



Maryland Department of Natural Resources - Forest Service  
6904 Hallowing Lane, Prince Frederick, MD 20678  
410-535-1303 [www.dnr.maryland.gov](http://www.dnr.maryland.gov) TTY users call via Maryland Relay



City of Greenbelt  
 Scale: 1" = 1,320'

8 x 8 Chs

78 Pls

WA = 348.85

WA-11-909-613-2809

① = 0.25, ② = 0.5, ③ = 1.0, ④ = 2.0

TALLIER: RL

OWNER: City of Greenbelt

RECORDER: RL

DATE: 9/26/13

Pt #	BA	Mechantable Saw Timber				Saw UGS	Pole Timber			Pole UGS	Small Tree		Site Index				1/20 AC	Merch. Logs	Merch. Sticks		
		24+	22-20	18-16	14-12		10	8	6		UGS	AGS	UGS	DBH	HT	R/IN				Age	
1	SG			WO	RO		VP	RO	SG		SG	BC	WLO		2.0	55'	9	40	20	1"	4'
	140																				2"
	P/ST			10	10		10	20	30												1"
Notes: SG BC RM WO RO Pt in between RD at Parking Lot flat terrain Moderate UDS																					
2		RO	RO	RO	WLO						WLO	SG							16	15"	2"
	160	WLO		CNO	RO						SG									16"	
	P/ST	20	20	20	40						20										
Notes: 7' near RD + Houses SG CNO WLO WO BC flat at slight rolling terr. Mod to ModThick UDS																					
3		RO		CNO	CNO		RO	CNO	RO		Sass								18	15"	2M
	190	CNO					CNO		WO		CNO									18"	3"
	P/ST	20		10	30		30	20	40												
Notes: P/STs between 2 paved walking trails nearby Ball field + houses CNO SG SB AH RO Sass Rolly terrain Mod to ModThick UDS																					
4							SG	SG	RM		SG								13		2"
	100										RM										1"
	P/ST						10	30	20	40											
Notes: P/STs in back of rollysack on grown field area? Area overgrown w/ GB SB MFR SG RM Thick UDS flat to rolly terr																					
5		WO	WO	SG	WO			BC	BC						12.4	61'	10	46	13	17"	2"
	140	CNO							WO											13"	
	P/ST	150	20	20	20			10	20												
Notes: P/ST near NBL (GIS) GB BC RM Arrowwood AH SG rolly terrain Moderate UDS																					
6					RM			RM	RM		RB								8	1"	2"
	80																				1"
	P/ST				20			10	20		30										
Notes: P/ST near Pond at house RB RO RM SG flat terrain MFR ModThick UDS																					
7		RO	CNO	RO				WO	WO		BC								12	11"	2"
	110		WO								RM										
	P/ST		20	30	20			10	10		20										
Notes: SG Arrowwood CNO RM A lot of VP blown down at debris in this area slight rolly terrain ModThick UDS																					
8		WO	WO		RM		TP	TP	BC		BC				12.8	65'	10	50	21	15"	2"
	110							RM			TP										3"
	P/ST	20	10		10		10	20	10		30										4"
Notes: P/ST near fence to 495 BC TP BC RM WO BC Wood Debris from storm damage slight to rolly terrain ModThick UDS to Thick UDS																					
9					TP			TP	TP	RM	RM				11.7	68'	7	28	17	1"	3"
	90																				2"
	P/ST				20			20	20	10	20										
Notes: TP RM SG BC slight rolly terrain Mod to ModThick UDS Pt in upper spot of UDS A lot of stump sprouts																					
10		RO	RO						BC		BC								11	11"	2"
	110	VP	BC								Sass										
	P/ST	WLO							10		30										
Notes: DL near Park edge GB SG DOG DWS Sass SB RC flat terr Mod to ModThick UDS Also on PL																					

TALLIER: RL

OWNER: City of Greenbelt

RECORDER: RL

DATE: 5/1/13

Pt #	BA	Mechantable Saw Timber				Saw UGS	Pole Timber			Pole UGS	Small Tree			Site Index				1/20 AC	Merch. Logs	Merch. Sticks
		24+	22-20	18-16	14-12		10	8	6		AGS	UGS	DBH	HT	R/IN	Age				
11	60	Ro	Wo			SG	SG	BL					11.6	83'	13	43	11	18'	2'	
Notes: Pt just in side of woodline Sac Bark Area Also nearby BLS Autumn Olive JHS SG BE RM ModStump for Thick UDS Storm Damage Wood Debris																				
12	120	Ro											13.6	68'	10	53	16	12'	2'	
Notes: Pt behind PW building near PL at RD's Hic AH BE RM Slightly rolling terrain ModThick UDS																				
13	210	TP				GA	SG	WSLO					12.3	86'	12	46	17	15'	2'	
Notes: Pt upslope from NBL's flat to rolling terrain Mod UDS RM SG BE WO RO Storm Damage Wood Debris in the area																				
14	90					TP	SG	RM									24	21'	3'	
Notes: Pt way near RD offset ≈ 3ch S Pt near RD at field edge RM AL LOR VP SG VP BlowDown Rolling terrain ModThick UDS																				
15	150	Ro				SG		BG					11.6	59'	10	44	15	12'	1'	
Notes: Pt nearby off ramp SG CNO AH BE WO RO Slight rolling terr modThick UDS																				
16	20							Apple									2		1'	
Notes: Pt near by Hwy PL at in among several open patches with trails RD look to be regen fields Apple VP SG BC BL <sup>RO</sup> Slight rolling terr Thick UDS open UDS																				
17	180	Ro	TP			BE	RO	BE					13.2	65'	11	51	11	12'	2'	
Notes: Pt's near by water line path BE AH RM SG DOA ROWO rolling terr modThick UDS																				
18	250	Ro	Wo			SG	SG	SG					12.2	85'	11	45	32	12'	3'	
Notes: Pt beside Lake AH RM RO WO SG WSLO flat to slight rolling terr. Thick UDS Also Pt new walk Path																				
19	120	Ro	Ro														14	11'	2'	
Notes: Pt behind Apt building nearby lake walkway path AH AH WO RM SG CNO rolling terr modThick UDS																				
20	150	Ro	TP														16	12'	2'	
Notes: Pt on lake trail off set ≈ 1ch N P beside NBL's RM BG GB flat terrain Thick UDS Pt near Lake trail																				

TALLIER: RL

OWNER: City of Greenbelt

RECORDER: RL

DATE: 5/2/13

Pt #	BA	Mechantable Saw Timber				Saw UGS	Pole Timber			Pole UGS	Small Tree		Site Index				1/20 AC	Merch. Logs	Merch. Sticks	
		24+	22-20	18-16	14-12		10	8	6		AGS	UGS	DBH	HT	R/IN	Age				
21	70		Ro		Ro		Wo			Ro							6	15'	2'	
SJP			10		30		10	10		10										
Notes: Pt near RD RM SG RoCh Flat to Slight Rolling Terr. Mod Thick UDS = more w/ ground cover Tree wise open																				
22	140		TP		TP		Rm			SG							13.8	98'	7	49
SJP			30	30	30		10	10	10	20							(98) TP	10	12'	3''
Notes: Pt by Lake at beside lake trail Rolling terrain Mod to Mod Thick UDS WO RMSG BGAH																				
23	140		TP		TP					SG										
SJP			40	20	40	20				20								15	2'	1'
Notes: Pt Not local trail SG BGAH BE Mod to Mod Thick UDS Rolling Terr																				
24	100		TP														12.2	60'	9	43
SJP			30	10	30			20	10								(60) RO	9	1'	2'
Notes: Pt by PL near RD SASS Thick GB WO RM RO Slight Rolling terrain Mod to Mod Thick UDS																				
25	200		TP		TP					SG							16.4	109'	8	54
SJP			80	10	30	30		20	20	10							(106) TP	12	2'	2'
Notes: Pt Near by B Ball Court and building also near NBLS Thick UDS Slight Rolling Terr. E July SG SYC RM																				
26	120		TP		TP															
SJP			10	20	20	40		10	20									12	11'	2'
Notes: Pt behind apt complex also near by baseball fields E July AH SG WO MW BE Rolling to slope terrain Mod Thick UDS																				
27	120		TP		TP					SG							13.5	93'	11	51
SJP			40	10	10	10			30	20							(92) SG	13	11'	2'
Notes: Pt near by FD Park lot at RD & Church BE AH MW Hic WO SG Flat to slight Rolling terrain Mod to Mod Thick UDS Also E IVY																				
28	160		TP		TP					SG							15.2	102'	9	51
SJP			60	30	30			10	10	20							(101) TP	15	15'	2'
Notes: Pt beside NBLS near tennis court and apt's nearby GBSG Elm AH E July MFR Rolling terrain Mod thick to Thick UDS																				
29	140		TP		TP												12.4	87'	12	47
SJP			30	20	30	20		30	10								(90) SG	8	11'	3''
Notes: Pt rear PL also behind maintenance field area MFR SG GB BB MW RM WO Thick ground near Rolling terrain Mod UDS																				
30	130		TP		TP												13.6	105'	10	68
SJP			10	10	30	20		30	30								(87) WO	12	12'	2''
Notes: GB AH RM SG WO RO M+L SASS slight rolling terrain Mod sparse to Mod UDS																				

TALLIER: RL

OWNER: City of Greenbelt

RECORDER: RL

DATE: 5/3/13

Pt #	BA	Mechantable Saw Timber				Saw UGS	Pole Timber			Pole UGS	Small Tree		Site Index				1/20 AC	Merch. Logs	Merch. Sticks
		24+	22-20	18-16	14-12		10	8	6		AGS	UGS	DBH	HT	R/IN	Age			
31	150	SG <sup>o</sup> Rm <sup>o</sup>	SG <sup>o</sup> Rm <sup>o</sup>	Rm <sup>o</sup>	SG <sup>o</sup>		SG <sup>o</sup>			Rm <sup>o</sup>						13	15' 1 1/2"	3"	
S/P		30	50	20	10		20			20									
Notes: Pt near by opening for Garden Area GB RMB CAH WO MFR Thick Groundcover mod UDS mod Rolly terr.																			
32	170	Rm <sup>o</sup>	SG <sup>o</sup> Rm <sup>o</sup>	SG <sup>o</sup>	SG <sup>o</sup>		SG <sup>o</sup>			Rm <sup>o</sup> SG <sup>o</sup>						13	1 1/2' 1 1/2"	2" 3"	
S/P		10	60	40	30		10			20									
Notes: Pt near by LD PL at fence line BE RM SG TP WO GB Wood Debris from blowdown? storm Damage Slight rolly to flat terr Mod UDS Thick GC																			
33	80						TP <sup>o</sup>	Rm <sup>o</sup>	SG <sup>o</sup> Bg <sup>o</sup>		SG <sup>o</sup> BE <sup>o</sup>		12.8	86'	8	36	11	2" 1"	
S/P							10	10	20		40								
Notes: Pt in among alot of VP BlowDown Few big canopy gaps SG BE GB BG RO TP Thick GC Wood Debris mod Thick UDS Rolly Terr																			
34	80				Elm <sup>o</sup> Rm <sup>o</sup>			SG <sup>o</sup> BTW <sup>o</sup>	Rm <sup>o</sup> SG <sup>o</sup>							11	1" 2"	3" 2"	
P/S					30			20	30										
Notes: Pt beside near by Garden Areas Thick GC w/ MFR GB, RM AH BC SG ALL SASS Rolly terr mod to Mod Thick UDS																			
35	90	Rm <sup>o</sup>		RO <sup>o</sup>	Rm <sup>o</sup>			Par <sup>o</sup>	Sass <sup>o</sup> BC <sup>o</sup>		Sass <sup>o</sup> Rm <sup>o</sup>					13	1" 2"	2"	
P/S		10		10	10			20	20		20								
Notes: Pt near by RD gap to Garden Area Thick GC w/ MFR GB, RM AH BC SG ALL SASS Rolly terr mod to Mod Thick UDS																			
36	170	TP <sup>o</sup> SG <sup>o</sup>	TP <sup>o</sup>	Rm <sup>o</sup> RO <sup>o</sup>	Rm <sup>o</sup> SG <sup>o</sup>				SG <sup>o</sup> Rm <sup>o</sup>		BE <sup>o</sup> Bg <sup>o</sup> SG <sup>o</sup>		16.8	119'	7	59	16	17' 1 1/2"	2" 1 1/2"
S/P		30	20	50	20				20		30								
Notes: Pt beside NBLs at nearby 495 SG TP AH RM BE BG SB flat to slight Rolly terr VP BlowDown Wood Debris Moderate UDS																			
37	170	WO <sup>o</sup> SG <sup>o</sup> TP <sup>o</sup>	Rm <sup>o</sup> WO <sup>o</sup>	Rm <sup>o</sup> WO <sup>o</sup>	WO <sup>o</sup>	TP <sup>o</sup>	WO <sup>o</sup>		Rm <sup>o</sup>		SG <sup>o</sup> Rm <sup>o</sup>						12	15' 1 1/2' 2"	2" 3" 5"
S/P		60	30	20	10	10	10		10		10								
Notes: Pt beside NBLs SG WO Hic AH BE OGG BG RM Mod Rolly terr. Mod Thick UDS																			
38	170	TP <sup>o</sup>		VP <sup>o</sup> Rm <sup>o</sup> SG <sup>o</sup>	SG <sup>o</sup> Rm <sup>o</sup>				Rm <sup>o</sup> SG <sup>o</sup>	SG <sup>o</sup> Rm <sup>o</sup>		Rm <sup>o</sup>					17	1 1/2' 11'	2" 3"
S/P				30	40				40	20		10							
Notes: Pt nearby woodstails at near ballfields. AH GB BE SG BG RM WO flat terr mod to Mod Thick UDS																			
39	170	LOB <sup>o</sup> VP <sup>o</sup>		VP <sup>o</sup> Rm <sup>o</sup>	VP <sup>o</sup> TP <sup>o</sup>		VP <sup>o</sup>		SG <sup>o</sup> Bg <sup>o</sup>		Rm <sup>o</sup>		13.1	78'	21	81	14	1 1/2' 1" 2"	2" 4" 1"
S/P		20		150	40		10		40		10								
Notes: Pt near by FD at Olds area Also pt in beside woods trail GB RM SG BG WO Mod UDS Thick GC in spots Rolly terr.																			
40	130	RO <sup>o</sup>	RO <sup>o</sup>	VP <sup>o</sup>	VP <sup>o</sup>		WO <sup>o</sup>	BE <sup>o</sup> WO <sup>o</sup>	RO <sup>o</sup> WO <sup>o</sup>		Rm <sup>o</sup> WO <sup>o</sup>		14.3	89'	15	78	16	1 1/2' 1"	2" 3"
P/S		10	10	10	10		10	30	30		20								
Notes: Pt on LD adjacent 2 chgs S Pt near by RO RM SG BG WO VP Storm Damage Blow Down Mod Rolly terr. Mod UDS																			

TALLIER: RL

OWNER: City of Greenbelt

RECORDER: RL

DATE: 5/6/13

Pt #	BA	Mechantable Saw Timber				Saw UGS	Pole Timber			Pole UGS	Small Tree			Site Index				1/20 AC	Merch. Logs	Merch. Sticks
		24+	22-20	18-16	14-12		10	8	6		AGS	UGS	DBH	HT	R/IN	Age				
UP mix 41	100		RO	WO	WO		RO	RO	WO								17	1 1/2"	2 1/2"	
P/S			10	10	30		10	30	10									1"	3"	
Notes: GB SG BE BG AH RM Rolling terr. Mod UDS Some storm damage alwood debris																				
UP/TP mix 42	160	WO	Hic	WO	SG		WO				Rm						12.3	6.3	10	4.9
S/P		RO		RO			SG										(64)	WO	12	1 1/2"
Notes: Blow Down Wood Debris WO RO SG WILC RM Rolling terr. Mod to Mod Thick UDS																				
UP mix 43	190	SG	RO	WO	RO		WO	WO	WO		BG									
S/P		RO			Hic						SG								14	1 1/2"
Notes: Pt near NBLs AH SG BG fern RO WO Rolling terr. Mod Thick to Thick UDS Old VP Blow Down																				
UP mix 44	180			VP	VP		VP	SG			Rm						12.6	8.4	12	7.3
S/P							40	10									(78)	VP	27	1 1/2"
Notes: Pt near woods trails GB BG SG WO RO AH RM Hic Mod Rolling terr. VP Blow Down Mod to Mod Thick UDS																				
UP/SG mix 45	180			VP	SG		SG	SG			BG									
S/P				SG	VP						SG								20	1 1/2"
Notes: Pt near on RD offset lch S. Also VP Blow Down at Storm Damage Wood Debris RM WO SG SG																				
UP mix 46	170	RO		RO	WO				WO		BG						12.6	6.3	9	5.0
S/P		WO		WO					RO		RO						(64)	RO	16	1 1/2"
Notes: Pt nearby Apt buildings AH BG MTL WORO GB CNO Slight rolling to Rolling terr. Mod UDS																				
UP/TP mix 47	120	TP	TP	TP	CNO						CNO									
S/P				RO	TP						BG								12	1 1/2"
Notes: Pt beside woods trail CNO RM BG SG WO Hic TP AH Rolling terr Mod Thick UDS																				
UP mix 48	160	RO	RO	WO	RO		WO	RO	RO		BG									
S/P					WO		10	20	20		Rm								14	1 1/2"
Notes: BG RM DOG AH Hic WO RO TP Rolling to steep terr Mod to Mod Thick UDS																				
UP/TP mix 49	130	TP	WO	TP	WO				TP		BG						13.8	7.9	10	6.8
S/P		WO	WILD														(67)	RO	18	1 1/2"
Notes: Pt beside woods trail and NBLs SG RM MTL BG RO WO Rolling to steep terr Mod to Mod Thick UDS																				
UP mix 50	130	RO	RO	RO	VP		RO	WO	WO		BG									
S/P					RO		10	10	20										19	1 1/2"
Notes: Pt near by Force Line (PB) Hic BG SG RM RO WO Storm Damage at Blow Down Mod UDS Rolling Terr.																				

TALLIER: RL

OWNER: City of Granbelt

RECORDER: RL

DATE: 5/9/13

Pt #	BA	Mechantable Saw Timber				Saw UGS	Pole Timber			Pole UGS	Small Tree			Site Index				1/20 AC	Merch. Logs	Merch. Sticks
		24+	22-20	18-16	14-12		10	8	6		AGS	UGS	DBH	HT	R/IN	Age				
51	170	TP: RO	TP: RO	RO	SG: TP	SG: 10	TP: 10	RO: 10		Rm: 20	SG: 20		13.6	93'	9	45	17	1 1/2	3	
S/P		60	20	10	TP: 30	10	10	10					(96) TP					1	2	
Notes: Pt near Woods Trail SG RM AH BG ROWO ModThick UDS Rolling Terr. (Poss stand change wide Dist Co RFB)																				
52	160	Ro	Ro	VP: VP		VP: 30	VP: 20	VP: 50		SG: 10			11.2	76'	11	51	17	1 1/2	3	
P/S		10	10	20	10	30	20	RO: 50					(76) VP					1	2	
Notes: Pt has alot of Storm Damage, VP Blow Down, Wood Debris AH SG RO Hic Rolling Terr. ModThick UDS																				
53	130			RO: 30		WO: 30	RO: 20	RO: 40		BG: 10							21	1	2 1/2	
P/S																			3	
Notes: Pt near by BG ML RM SG RO SASS Pt has some storm Damage Rolling Terr. Mod UDS																				
54	160	TP	RO: WO	RO: WO			RO: 10	WO: 10		Sass: 30			12.6	69'	11	57	12	1 1/2	2	
S/P		10	20	40	40								(63) WO					2	3	
Notes: Pt near by Fence line at 295 Blow Down = Storm Damage RM ML RM ROWO SASS Hic Rolling Terr. Mod UDS																				
55	120	RO: RO		RO: 30			WO: 20	WO: 20		Rm: 10							13	1 1/2	3	
S/P		20	20																2	
Notes: RO SG WO BG RM Pt has some Blow Down = Storm Damage Rolling Terr ModThick UDS																				
56	160	WO: TP	TP: HIC			WO: 10	WO: 10	RO: 10		BG: 20							11	1 1/2	3	
S/P		60	10	40		10	10	10										2	2	
Notes: BG RM WO RO Pt near BLS Rolling Terr Mod to ModThick UDS																				
57	110	TP: RO	RO: TP	RO: 20		RO: 10		RO: 10					13.1	76'	10	66	13	1 1/2	3	
S/P		20	30	20	10	10		10					(66) RO					1	1	
Notes: Hic RM RO WO DOG Steep Terr Mod UDS																				
58	140	TP: LOB	RO: LOB	LOB: TP						SG: 20							13	1 1/2	2	
S/P		30	20	20															2	
Notes: Pt in VP Blow Down Area (old) Canopy Gaps w/ TP regen TP RO Hic SG Flat to Rolling Terr Thick UDS																				
59	120	LOB: RO	VP: RO	WO: RO			VP: 20	LOB: 10		BG: 10			14.1	80'	10	71	19	1 1/2	3	
S/P			20	40	20		20	10					(64) WO						1	
Notes: BG AH WO RO Rolling to Steep Terr. Mod to ModThick UDS																				
60	140	TP: TP	TP: TP	TP: RM			SG: 10	SG: 20		BG: 10			15.6	116'	8	61	11	1 1/2	2	
S/P		20	10	20	40		10	20					(110) TP						1	
Notes: Pt in among VP Blow Down RM SG AH GB BG WO ROWO Thick GC ModThick UDS Flat to Slight Rolling Terr																				



TALLIER: RL

OWNER: City of Greenbelt

RECORDER: RL

DATE: 5/9/13

Pt #	BA	Mechantable Saw Timber				Saw UGS	Pole Timber			Pole UGS	Small Tree			Site Index				1/20 AC	Merch. Logs	Merch. Sticks
		24+	22-20	18-16	14-12		10	8	6		AGS	UGS	DBH	HT	R/IN	Age				
61	150	TP <sup>+</sup> SG <sup>+</sup>	RO <sup>+</sup> SG <sup>+</sup> TP <sup>+</sup>	WO <sup>+</sup> TP <sup>+</sup> SG <sup>+</sup>	SA <sup>+</sup>		RO <sup>+</sup>	BG <sup>+</sup> WO <sup>+</sup> RM <sup>+</sup>		RM <sup>+</sup>						15	1'- 1/2"	1'- 2'- 3'-		
Notes: GB RM WO RO BG RM AH Mod to Thick GC Mod UDS Rolling terr. Storm Damage wood debris Blow Down																				
62	160	RO <sup>+</sup> SG <sup>+</sup>	TP <sup>+</sup>	RO <sup>+</sup> VP <sup>+</sup> LOB <sup>+</sup>			RO <sup>+</sup>	RO <sup>+</sup> SG <sup>+</sup> WO <sup>+</sup>		Hic			14.2	85'	11	76	20	1'- 1/2"	2'- 3'-	
Notes: PT beside Woods Trails BE SG WO AH RM Hic VP Blow Down Some Storm Damage: wood debris Rolling terr Mod to Med Thick UDS																				
63	120	TP <sup>+</sup>	RO <sup>+</sup> TP <sup>+</sup>	TP <sup>+</sup> RO <sup>+</sup> SG <sup>+</sup> LOB <sup>+</sup>			RO <sup>+</sup>	WO <sup>+</sup>								18	1'- 1/2"	2'- 3'-		
Notes: SG WO RM CH Hic BG Rolling terr mod UDS																				
64	150		RO <sup>+</sup>	RO <sup>+</sup>			CNO <sup>+</sup> RO <sup>+</sup>	RO <sup>+</sup> WO <sup>+</sup>		BG <sup>+</sup>						18	1'- 1/2"	3'- 2'-		
Notes: Storm Damage wood debris mTL BG RO WO Staking snags Flat to rolling to steep terr. mod to med thick																				
65	180	TP <sup>+</sup>	TP <sup>+</sup> SG <sup>+</sup>	TP <sup>+</sup> CNO <sup>+</sup> SG <sup>+</sup>			WO <sup>+</sup>			BG <sup>+</sup>			14.7	99'	8	52	14	2'- 1/2"	2'-	
Notes: PT beside Woods Trails at N by NBL SG CNO AH BG RM Hic Slight to rolling terr mod thick UDS																				
66	150	TP <sup>+</sup>	TP <sup>+</sup> SG <sup>+</sup>	CNO <sup>+</sup> SG <sup>+</sup> TP <sup>+</sup>			SG <sup>+</sup>			SG <sup>+</sup> AH <sup>+</sup>						9	1'- 1/2"	3'- 2'-		
Notes: Rolling terr. mod thick UDS AH BG RO Hic SG RM																				
67	150	WO <sup>+</sup>	TP <sup>+</sup> RO <sup>+</sup> RM <sup>+</sup>	VP <sup>+</sup> RO <sup>+</sup> RM <sup>+</sup>	WO <sup>+</sup> TP <sup>+</sup> RM <sup>+</sup>		RM <sup>+</sup>	RM <sup>+</sup> TP <sup>+</sup>		SG <sup>+</sup>						15	1'- 1/2"	3'- 2'-		
Notes: PT by Observatory at Match Pile offset NE (red bar) Thick GC GB MFR JUS SG TP RM Rolling to steep terr mod UDS																				
68	170	TP <sup>+</sup> SG <sup>+</sup>	TP <sup>+</sup> RO <sup>+</sup> WO <sup>+</sup>	RO <sup>+</sup> WO <sup>+</sup>			WO <sup>+</sup>			SG <sup>+</sup> AH <sup>+</sup>			13.1	94'	9	48	15	1'- 1/2"	2'-	
Notes: PT up slope from BLS near by 295 SG RM AH WO Hic Rolling terr mod UDS & Data show SG/TP/RO/NO/REG																				
69	150	TP <sup>+</sup>	WO <sup>+</sup>	TP <sup>+</sup> SG <sup>+</sup>	TP <sup>+</sup>		TP <sup>+</sup>			RM <sup>+</sup> TP <sup>+</sup>						15	1'- 1/2"	4'- 3'-		
Notes: PT Mid Slope from BLS at 295 RM WO RO SG MFR Steep terr Thick GC mod to med thick UDS																				
70	120	TP <sup>+</sup> WO <sup>+</sup> RO <sup>+</sup>	TP <sup>+</sup>	WO <sup>+</sup> TP <sup>+</sup>	RO <sup>+</sup> TP <sup>+</sup>		TP <sup>+</sup>	SG <sup>+</sup>					15.3	113'	7	62	16	1'- 1/2"	2'- 3'-	
Notes: Slight rolling terrain TP SG SG SS RO WO GB Hic Mod to Med Thick UDS Storm Damage canopy gaps																				

TALLIER: RL

OWNER: City of Greenbelt

RECORDER: RL

DATE: 5/10/13

Pt #	BA	Mechantable Saw Timber				Saw UGS	Pole Timber			Pole UGS	Small Tree		Site Index				1/20 AC	Merch. Logs	Merch. Sticks
		24+	22-20	18-16	14-12		10	8	6		AGS	UGS	DBH	HT	R/IN	Age			
71	160	TP	WO	WO	WO		WO	SG	WO		SG		14.6	85'	11	75	14	2'	2'
SIP		30	30	20	30		10	20	10		10		(65) WO					1:1	3'
Notes: <u>Alt SG RO WO RM Hic Pt Mid slope Sceptor Mod UDS</u>																			
72	140	TP	TP	WO		WO	WO			Rm							16	2'	2'
SIP		30	20	30	20		20	10		10								1:1	3'
Notes: <u>Pt near Woods Trail VP Blow Down in the area SG WO RO RM GB Hic Flat to Rolling for Mod UDS</u>																			
73	130	TP	TP	SG	RM		SG						13.2	91'	9	44	19	1 1/2'	3'
SIP		20	40	30	30		10						(95) TP					2'	11'
Notes: <u>Flat Bottom skunk cabbage BRM SG Fern Alt Pt beside NBL Mod UDS</u>																			
74																			
Notes: <u>Tuner Cemetery TP RM SG Hic Sigs</u>																			
75																			
Notes: <u>Indian Spring up slope Oak mix bottom is TP/UP Alt low TP SG RO cno Hic BE</u>																			
6																			
Notes:																			
7																			
Notes:																			
8																			
Notes:																			
9																			
Notes:																			
0																			
Notes:																			