

# City Council Work Session

## Proposal to Dredge Greenbelt Lake Fore Bays

8 p.m., Monday  
February 1, 2016

Council Chambers

Attendees – Ken Dunn and Neil Weinstein,  
Soltesz Engineering

Pete Littleton and Tasha Brokenberry, Corvias



November 10, 2015

Ms. Terri Hruby  
City of Greenbelt  
25 Crescent Road  
Greenbelt, Maryland

Re: Proposed Water Quality Improvements for Buddy Attick Lake Park  
Soltesz, LLC No.: 3564-00-00

Dear Ms. Hruby,

As you know Soltesz is working with the Clean Water Partnership (CWP) to help Prince George's County meet the required stormwater management retrofit goals that are identified in the current Nonpoint Source Discharge Elimination System (NPDES) permit that is issued by the State of Maryland Department of the Environment (MDE). We would like to propose to the City of Greenbelt that the CWP dredge and maintain the two (2) existing fore bays in Buddy Attick Lake Park. This work will include the overall water quality in the lake and reduce sediment loads to the deeper parts of the lake.

Subject to City of Greenbelt approval, our team will prepare all drawings and specifications and obtain all applicable Prince George's County, Federal, and MDE permits for the project. We will also obtain any applicable City of Greenbelt permits and work with your City departments and citizen groups to make sure that this project meets all of your community development and environmental goal. Subject to receiving the necessary approvals and permits from County and State authorities, we will then install all sediment and erosion controls and dredge and dispose of the material. The site will be stabilized and restored. The CWP will also maintain the fore bay for 30 years. We intend to do this work with local Prince George's County engineering and construction firms and citizens. The CWP would then report the treated acreage to Prince George's County DoE and MDE for credit.

We would like to review the program with the City of Greenbelt at your convenience. However, if this proposal is of interest to you, we would need to survey the fore bays and request that you issue the necessary "permit" to do so.

Sincerely,

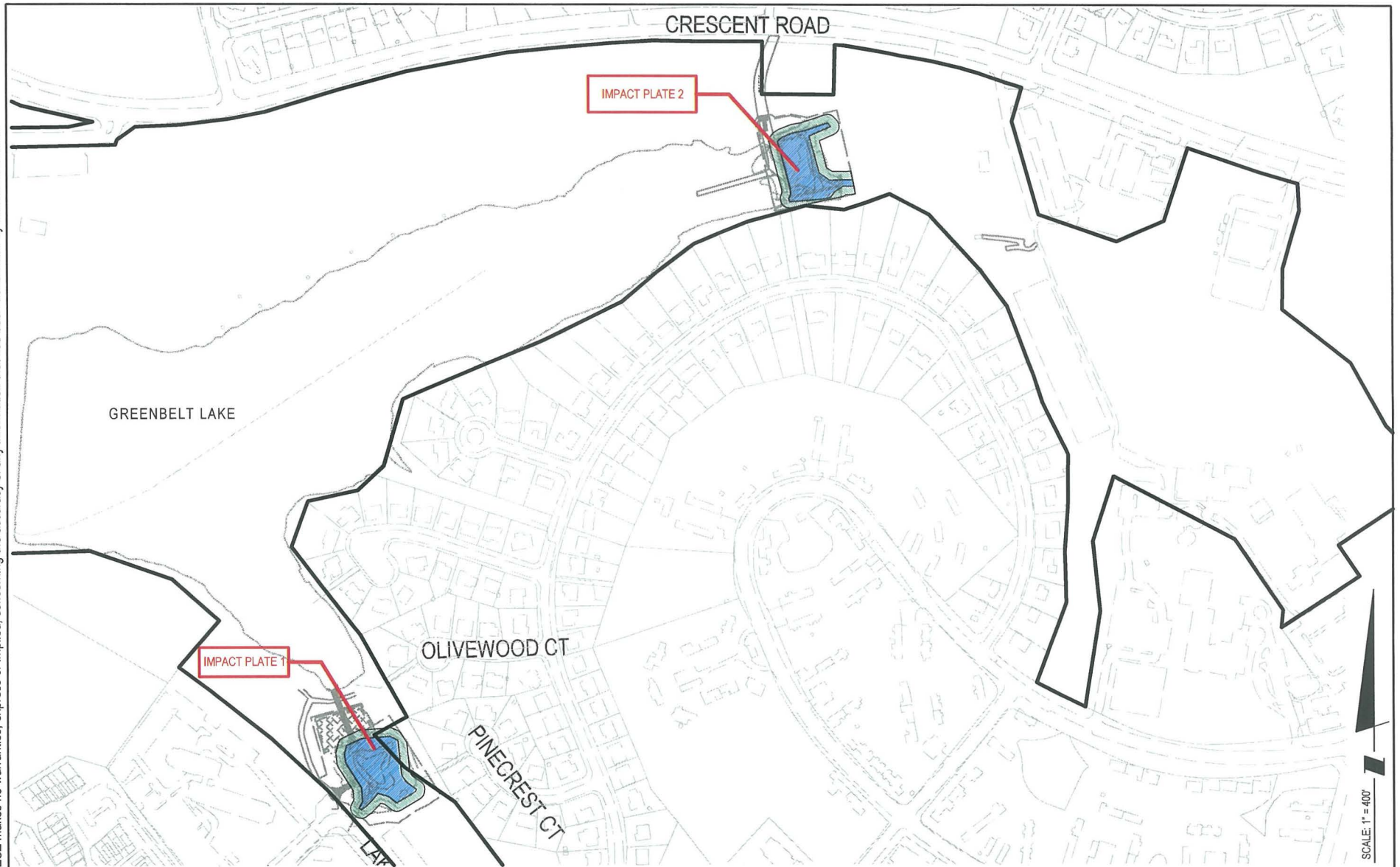
Soltesz, LLC

A handwritten signature in black ink, appearing to read "Ken Dunn", is written over a horizontal line.

Ken Dunn, RLA, AICP, LEED AP  
Managing Member

cc: Pete Littleton  
Neil Weinstein

The original of this drawing document was prepared by Soltesz, Inc. (SOLTESZ). If this document was not obtained directly from SOLTESZ and/or it was transmitted electronically, SOLTESZ cannot guarantee that unauthorized changes and/or alterations were not made by others. If verification of the information contained herein is needed, contact should be made directly with SOLTESZ. SOLTESZ makes no warranties, express or implied, concerning the accuracy of any information that has been transmitted by electronic means.



 25' WETLAND BUFFER IMPACT AREA

 WETLAND IMPACT AREA

PLATE #	WETLAND IMPACT(SF)	WETLAND BUFFER IMPACT(SF)
1	26,882 SF	20,123 SF
2	23,295 SF	19,529 SF
<b>TOTAL</b>	<b>50,177 SF</b>	<b>39,652 SF</b>



**SOLTESZ**  
 4300 Forbes Boulevard, Suite 230  
 Lanham, MD 20706  
 P.301.794.7555 F.301.794.7656  
 www.solteszco.com

## IMPACT PLATE AREA KEY MAP Proposed Site

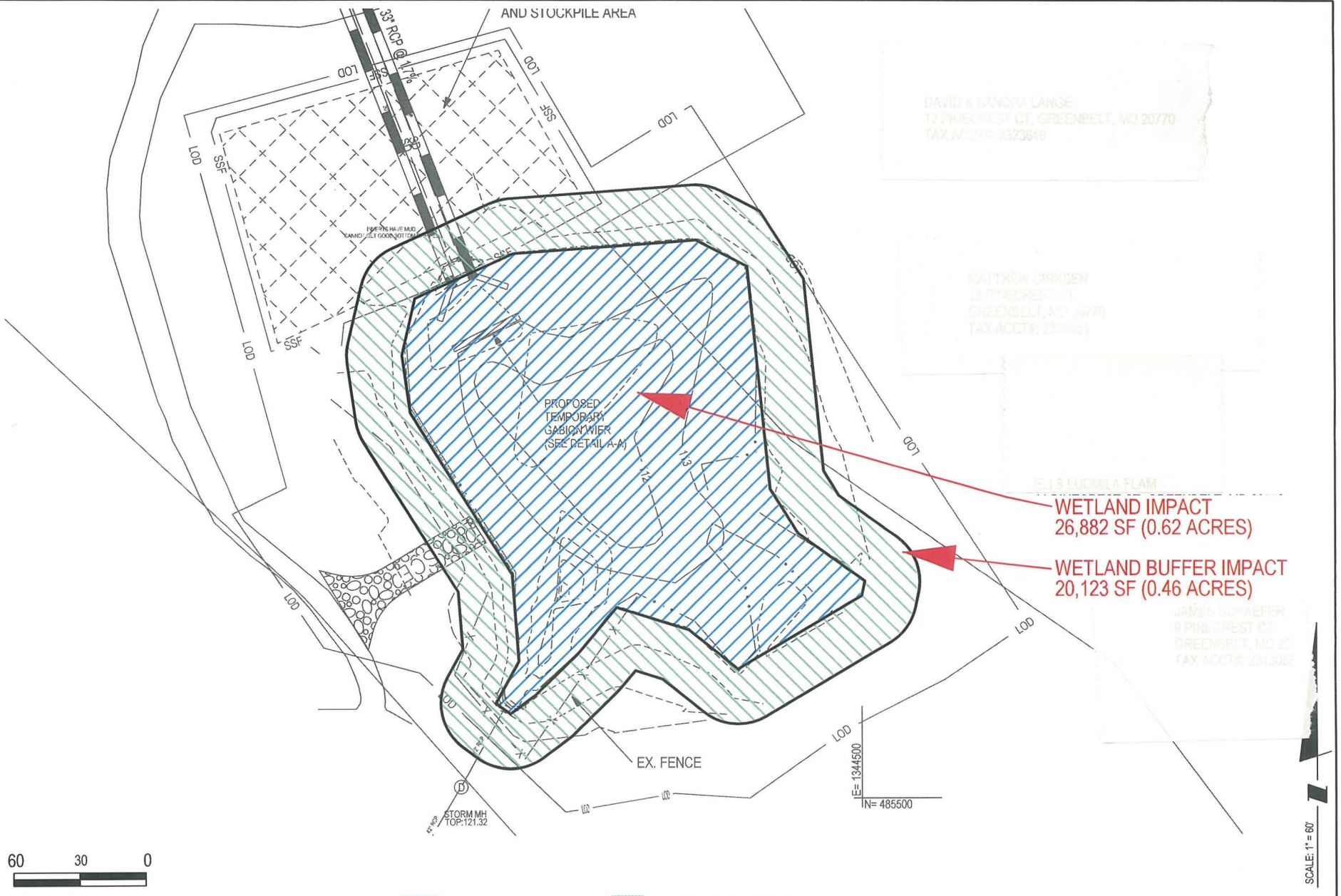
WETLAND/WATERS IMPACT EXHIBIT  
 GREENBELT LAKE

BERWYN / 21ST ELECTION DISTRICT  
 PRINCE GEORGE'S COUNTY, MARYLAND

DECEMBER 2015

SHEET 1 OF 3

The original of this drawing document was prepared by Soltesz, Inc. (Soltesz). If this document was not obtained directly from Soltesz and/or it was transmitted electronically, Soltesz cannot guarantee that unauthorized changes and/or alterations were not made by others. If verification of the information contained hereon is needed, contact should be made directly with Soltesz. Soltesz makes no warranties, express or implied, concerning the accuracy of any information that has been transmitted by electronic means.



DAVID & SANDY LANGE  
13 PINECREST CT, GREENBELT, MD 20770  
TAX ACCT# 2323640

MATTHEW DRIGEN  
13 PINECREST CT  
GREENBELT, MD 20770  
TAX ACCT# 230961

ELI & LUCYMA FLAN

WETLAND IMPACT  
26,882 SF (0.62 ACRES)

WETLAND BUFFER IMPACT  
20,123 SF (0.46 ACRES)

JAMES NEWBER  
8 PINECREST CT  
GREENBELT, MD 20770  
TAX ACCT# 231306



 WETLAND IMPACT AREA

 25' WETLAND BUFFER IMPACT AREA



**SOLTESZ**  
4300 Forbes Boulevard, Suite 230  
Lanham, MD 20706  
P.301.794.7555 F.301.794.7656  
www.solteszco.com

# IMPACT PLATE #1

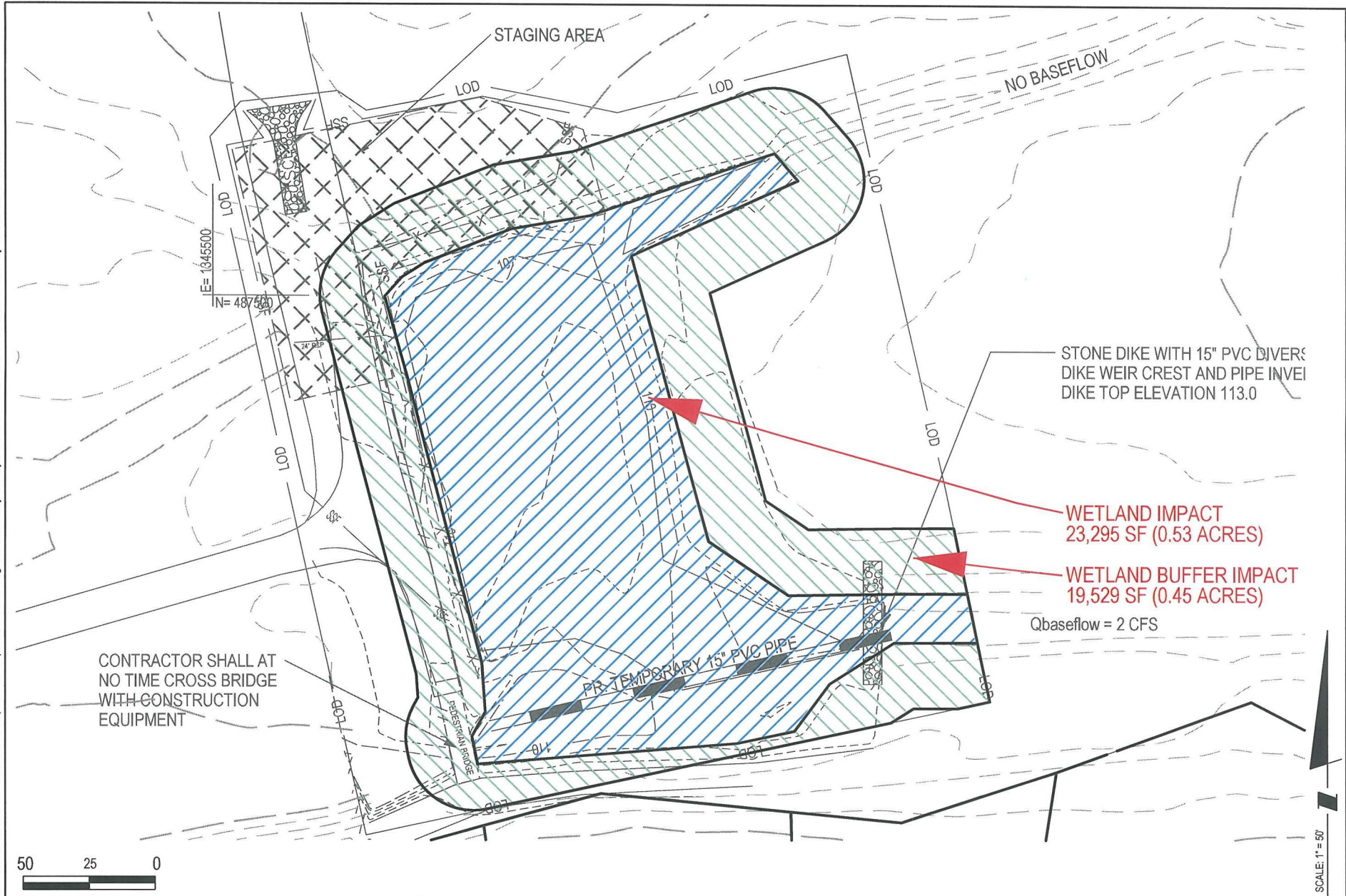
WETLAND/WATERS IMPACT EXHIBIT  
GREENBELT LAKE

BERWYN / 21ST ELECTION DISTRICT  
PRINCE GEORGE'S COUNTY, MARYLAND

DECEMBER 2015

SHEET 2 OF 3

The original of this drawing document was prepared by Soltesz, Inc. (Soltesz). If this document was not obtained directly from Soltesz and/or it was transmitted electronically, Soltesz cannot guarantee that unauthorized changes and/or alterations were not made by others. If verification of the information contained hereon is needed, contact should be made directly with Soltesz. Soltesz makes no warranties, express or implied, concerning the accuracy of any information that has been transmitted by electronic means.



**SOLTESZ**  
 4300 Forbes Boulevard, Suite 230  
 Lanham, MD 20706  
 P.301.794.7555 F.301.794.7656  
 www.solteszco.com

-  WETLAND IMPACT AREA
-  25' WETLAND BUFFER IMPACT AREA

## IMPACT PLATE #2

WETLAND/WATERS IMPACT EXHIBIT  
 GREENBELT LAKE  
 BERWYN / 21ST ELECTION DISTRICT  
 PRINCE GEORGE'S COUNTY, MARYLAND  
 DECEMBER 2015 SHEET 3 OF 3